

FLORIDA STATE LIBRARY

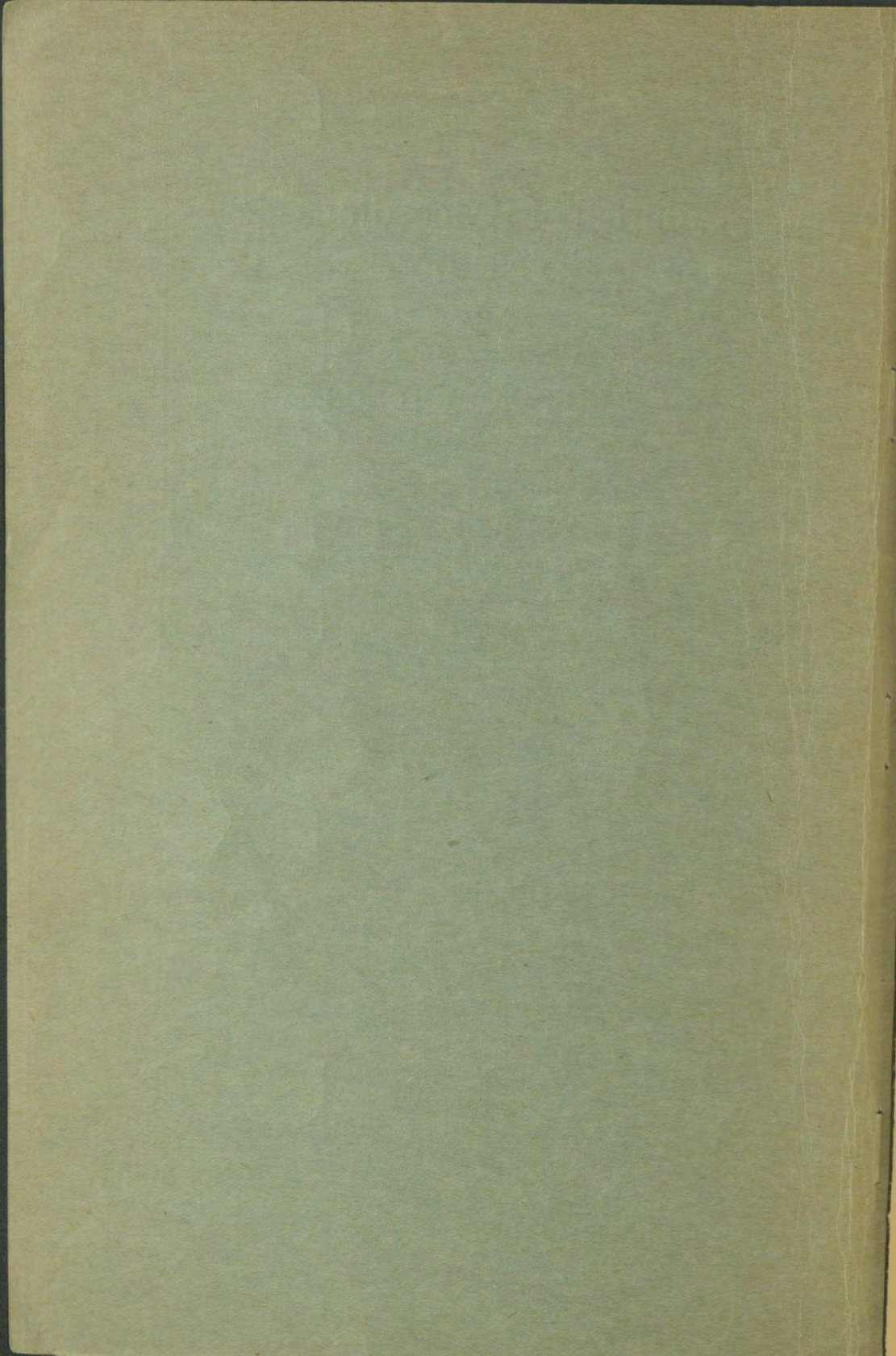
**Journal of Proceedings  
and Year Book**  
OF THE 70th ANNUAL SESSION  
OF THE  
**Florida Conference**  
AFRICAN METHODIST EPISCOPAL CHURCH  
HELD IN  
MT. ZION A. M. E. CHURCH  
MADISON, FLORIDA  
DECEMBER 2-6, 1936



RT. REV. R. A. GRANT, D. D., LL. D.....Presiding Bishop  
REV. S. P. ROBINSON ..... Chief Secretary

The next Session of the Florida Conference will convene in Arnett Chapel A. M. E. Church, Quincy, Florida, at the call of the Bishop.

FLA  
287.8  
F636  
1936





# 37778129

STATE LIBRARY OF FLORIDA  
  
3 1246 00641652 5

**Journal of Preceedings  
and Year Book**  
**OF THE 70th ANNUAL SESSION**  
**OF THE**  
**Florida Conference**  
**AFRICAN METHODIST EPISCOPAL CHURCH**  
**HELD IN**  
**MT. ZION A. M. E. CHURCH**  
**MADISON, FLORIDA**  
**DECEMBER 2-6, 1936**



RT. REV. R. A. GRANT, D. D., LL. D.....Presiding Bishop  
REV. S. P. ROBINSON ..... Chief Secretary

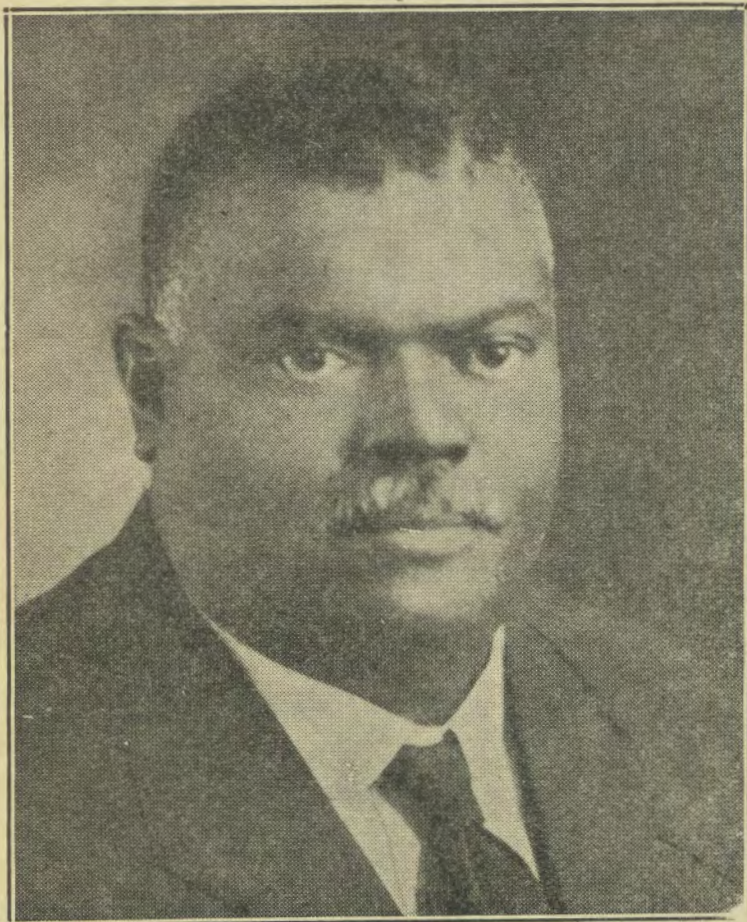
---

The next Session of the Florida Conference will convene in Arnett Chapel A. M. E. Church, Quincy, Florida, at the call of the Bishop.

F 287.8

F 636



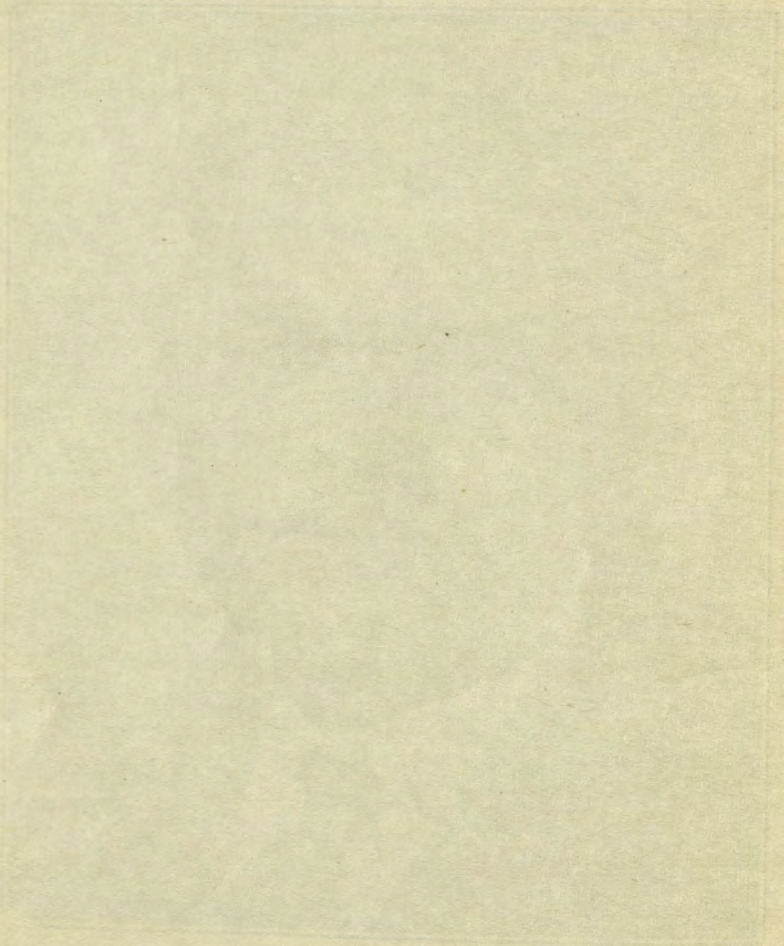


REV. R. A. GRANT. D. D. LL. D., Presiding Bishop  
11th Episcopal District, A. M. E. Church

971

NRS 8-18-43

*made,*



Faint, illegible text or markings, possibly bleed-through from the reverse side of the page.



## CONFERENCE OFFICERS

RT. REV. R. A. GRANT, D. D. ....	Presiding Bishop
Headquarters: Episcopal Residence, Edward Waters College, Jacksonville, Fla.; Home Address: 1821 Myrtle Ave., Jacksonville	
REV. S. P. ROBINSON .....	Chief Secretary
REV. C. W. DUDLEY .....	Recording Secretary
REV. S. D. COOPER .....	Statistical Secretary
REV. A. I. G. RICHARDSON .....	Conference Treasurer

## MARSHALLS

REV. S. SAMPSON .....	Chief Marshall
REVS. A. F. LITTLE, JOSEPH JACKSON, B. MITCHELL, .....	Assistant Marshalls.

**CONFERENCE BOUNDS:** Bounds of the Conference—Fourth pew from the chancel, including the amen corners. Carried.

**REPORTERS**—Rev. J. F. Livingston, Church Papers; Rev. W. R. Akery, Secular Press.

**HOURS OF MEETING:** Conference convenes at 9:00 a. m. to 1:00 p. m. Reconvene at 2:00 p. m., adjourn at will.

## LAY DELEGATES BY DISTRICTS

Tallahassee District—H. Thompson, D. R. Lincoln and W. M. McCray.

Monticello District—W. M. Groover, H. C. Collins and E. Jones.

Quincy District—A. D. Paul, M. Curtis, C. H. Henry and Mrs. Rachel Demus.

Madison District—T. Z. Smith, A. G. Coffee and Mrs. Donie Townsend.

Perry District—A. A. McKinnie, M. S. Holt, J. A. Mallory and Viney Adkins.

## TRUSTEES OF EDWARD WATERS COLLEGE

**MINISTERIAL:** A. I. G. Richardson, Monticello, Fla.; I. S. Roundtree, Prrey, Fla.; P. E. Daugherty, Monticello, Fla.; A. L. Bennett, Quincy; J. F. Livingston, Quincy, Fla.; S. D. Cooper, Quincy, Fla.; C. H. Burgess, Monticello, Fla.; W. R. Akery, C. H. Dudley, Quincy, Fla.; I. Twiggs, Madison, Fla. W. G. Pinkney, Quincy, Fla.; H. E. Daniels, Quincy, Fla.; T. B. Carr, Tallahassee, Fla.; I. Hackley, Tallahassee; D. H. Hackley, Monticello, Fla.; G. W. Hill, Talahassee; C. T. Sykes, Tallahassee, Fla.; B. Zanders, Aucilla, Fla.; J. R. Hansberry, Havana, Fla.; C. J. Reed, Tallahassee.

**LAYMAN:** C. H. Henry, Quincy; A. A. McKinnie, W. S. Stevens, Quincy, Fla.



## CONFERENCE ROLL

## PRESIDING ELDERS

Rev. A. L. Bennett  
 Rev. A. I. G. Richardson

Rev. C. H. Burgess  
 Rev. W. M. Mitchell

## ELDERS

Adams, W. A.  
 Akery, W. R.  
 Alexander, B.  
 Anderson, H. L.  
 Brooks, B. B.  
 Bing, A.  
 Bradley, J. C.  
 Blake, W. H.  
 Browning, W. B.  
 Bradwell, Ralph  
 Branton, J. W.  
 Bishop, W. C.  
 Branch, J. B.  
 Byrd, Henry  
 Cooper, S. D.  
 Caldwell, S. C.  
 Cowart, A. B.  
 Carr, T. B.  
 Davis, H. D.  
 Diggs, H.  
 Dean, G.  
 Dubinion, S. H.  
 Daniels, H. E.  
 Dudley, C. H.  
 Figgers, T.  
 Gibbs, S. G.  
 Grant, G. B. R.  
 Goines, G. W.  
 Golden, Alfred  
 Hansberry, J. R.  
 Hooks, S. P.  
 Hackley, I.  
 Hackley, D. H.  
 Hampton, Harry  
 Hill, G. W.  
 Hinson, A.  
 Hill, E.

James, Samuel  
 Jackson, D. J.  
 Johnson, L. H.  
 Jones, G. W.  
 Jones, Hardy  
 Jones, Willie  
 Livingston, J. F.  
 Lewis, Henry  
 Mitchell, W. M.  
 Miller, S. P.  
 Mitchell, B. L.  
 Montgomery, H.  
 Mack, B. J.  
 Miller, J. L.  
 Mayo, Jerry  
 Moor, A. V.  
 Nathan, E.  
 People, J. E.  
 Pinkney, W. G.  
 Parish, Arthur  
 Peck, M.  
 Perry, K. S.  
 Roberts, B.  
 Robinson, S. P.  
 Robinson, H. R.  
 Reed, C. J.  
 Reshard, J. H.  
 Starks, M. S.  
 Stevens, W. A.  
 Sampson, S.  
 Scott, Samuel  
 Sykes, C. T.  
 Stewart, Sylvester  
 Scott, Isaiah  
 Stockton, A. L.  
 Twiggs, I.  
 Taylor, E.



Underwood, H. M.  
Verrett, J.  
Williams, G. B.  
Wilson, J. T.  
White, G. J.  
Williams, George

Williams, Cecil  
Whorley, S. P.  
Yant, T. E.  
Zanders, Ben  
Wilson, David V.

## DEACONS

Anders, H. W.  
Auston, Jacob  
Bradley, Frank  
Chambers, George  
Daily, Henry  
Dupont, Solomon  
Groover, John

Johnson, R. H.  
Littles, A. F.  
Nealy Shellie  
Robert, Mose, E.  
Sanders, Andrew  
Williams, C. W.

## LOCAL DEACONS

Johnson, David  
Littles, Andrew

King, Matthew

## LICENTIATES

Armstead, Henry  
Foston, Williams H.  
Walden, Benjamin

Hooks, B. F.  
Hudson, William L.

## SUPERNUMERARIES

Andres, W. A. J.

## SUPERANNUATES

Baker, A. B.  
Browning, W. B.  
Simpkins, A.  
Washington, W. W.  
William, G. B.

James, Samuel  
Starks, M. S.  
Grant, G. B. R.  
Dubignon, S. H.

WIDOWS IN THE FLORIDA CONFERENCE AND THEIR  
POST OFFICE ADDRESSES

Mrs. Laura E. Harris .....	Monticello, Fla.
Mrs. Rosa Martin .....	R. 1, Box 57, Monticello, Fla.
Mrs. Josephine Townsend .....	Jennings, Fla.
Mrs. A. A. McKinnie .....	R. 2, Aucilla, Fla.
Mrs. E. B. Footman .....	Quincy, Fla.
Mrs. Hattie Jones .....	Quincy, Fla.
Mrs. Henrietta Bannerman .....	Quincy, Fla.
Mrs. Victoria Baker .....	Quincy, Fla.
Mrs. Emma Grant .....	Chaires, Fla.
Mrs. Ella Kershaw .....	Tallahassee, Fla.

Mrs. Melvina Bryant .....	Madison, Fla.
Mrs. F. A. Johnson .....	Chaires, Fla.
Mrs. Charlotte Culpepper .....	Monticello, Fla.
Mrs. Hagar Neal .....	Chaires, Fla.
Mrs. Jane Lawyer .....	Madison, Fla.
Mrs. Hattie Jones .....	208 Love St., Quincy, Fla.
Mrs. Mariah Martin .....	Quincy, Fla.
Mrs. Eliza Harvey .....	Henson, Fla.
Mrs. Sarah Wyche .....	Madison, Fla.
Mrs. Sallie Harris .....	Orange City, Fla.
Mrs. Sallie Mitchell .....	Madison, Fla.
Mrs. Candice Harvey .....	R. 2, Quincy, Fla.
Mrs. Frances Bruce .....	R. 2, Box 29, Taallahassee, Fla.

### NECROLOGY

"Servants of God, well done,  
Rest from thy loved employ,  
The battle fought, the victory won,  
Enter the Master's joy."

### GONE BUT NOT FORGOTTEN

Fuller White	W. L. Jackson
Benjamin Wilson	N. H. Hawkins
Allen Jones	I. H. Hagans
Allen Atwaters	A. Hammonds
M. J. Jones	C. H. Moore
C. H. C. Dabney	J. S. Simons
T. W. Dawkins	W. M. Wyche
B. C. Gibbs	A. G. Bryant
Peter Fagans	W. H. Lawyer
W. C. Steward	S. P. Harvey, 1933
J. Baldwin	C. J. Jordan, 1933
A. R. Hansbury	H. D. Bowman, 1934
E. B. Footman	L. D. Johnson
G. W. Deadwyler	M. C. Charles, 1935
A. J. Kershaw	G. W. McGhee, 1936
Paul Barnett	F. E. West
C. F. Brown	F. Lavett
John Taylor	George Anderson
W. M. Townsend	J. W. Walker
W. D. Harris	Dean Earl
W. M. Martain	F. B. Brooks



M. Ousley  
T. W. Meadows  
N. J. Lincoln  
W. F. Bannerman  
S. W. Frazier  
T. W. Williams  
S. D. Jordan  
W. H. Wester  
Henry Bagley  
R. L. Martain  
James Scott  
S. S. Herndon  
F. A. Johnson  
G. W. Culpepper  
J. E. Roberts

J. B. Blunt  
J. S. Davis  
W. M. Middleton  
A. A. McKinney  
James Hogans  
W. S. Grant  
B. F. Dilworth  
J. D. Neal  
T. Harvey  
J. F. Savage, 1933  
P. T. Crenshaw, 1933  
F. W. Washington, 1934  
W. N. Mitchell, 1934  
Paul Walker, 1935  
I. Bruce, 1936

### ORGANIZATION AND HISTORY

- | No. | Place of Meeting          | Dates           | Presiding Bishop       | Chief Secretaries                      |
|-----|---------------------------|-----------------|------------------------|--|
| 1.  | Tallahassee,              | June 7, 1876,   | Bishop A. W. Wayman;   | B. W. Quinn,<br>Chief Secretary.       |
| 2.  | Tallahassee,              | May 4, 1868,    | Bishop A. W. Wayman;   | B. T. Tanner,<br>Chief Secretary.      |
| 3.  | Jacksonville,             | March 20, 1869, | Bishop John M. Brown;  | Robert Mea-<br>cham, Chief Secretary.  |
| 4.  | Quincy, (Date not known), |                 | Bishop John M. Brown;  | J. H. Arm-<br>strong, Chief Secretary. |
| 5.  | Madison,                  | Dec. 10, 1876,  | Bishop John M. Brown;  | J. H. Armstrong,<br>Chief Secretary.   |
| 6.  | Apalachicola,             | Dec. 7, 1871,   | Bishop John M. Brown;  | J. H. Arm-<br>strong, Chief Secretary. |
| 7.  | Monticello,               | Dec. 20, 1872,  | Bishop T. M. D. Ward;  | J. H. Armstrong,<br>Chief Secretary.   |
| 8.  | Gainesville,              | Dec. 20, 1873,  | Bishop T. M. D. Ward;  | J. H. Armstrong,<br>Chief Secretary.   |
| 9.  | Pensacola,                | Dec. 26, 1874,  | Bishop T. M. D. Ward;  | J. H. Armstrong,<br>Chief Secretary.   |
| 10. | Jacksonville,             | March 4, 1876,  | Bishop J. P. Campbell; | J. H. Arm-<br>strong, Chief Secretary. |
| 11. | Monticello,               | Feb. 2, 1877,   | Bishop J. P. Campbell; | J. H. Armstrong,<br>Chief Secretary.   |
| 12. | Quincy,                   | Feb. 13, 1878,  | Bishop J. P. Campbell; | J. H. Armstrong,<br>Chief Secretary.   |
| 13. | Pensacola,                | Feb. 15, 1879,  | Bishop J. P. Campbell; | J. H. Armstrong,<br>Chief Secretary.   |
| 14. | Apalachicola,             | Mar. 17, 1880,  | Bishop J. P. Campbell; | J. H. Arm-<br>strong, Chief Secretary. |
| 15. | Tallahassee,              | Dec. 7, 1880,   | Bishop A. W. Wayman;   | S. L. Sims,<br>Chief Secretary.        |
| 16. | Marianna,                 | Dec. 8, 1881,   | Bishop A. W. Wayman;   | A. J. Kershaw,<br>Chief Secretary.     |
| 17. | Monticello,               | Dec. 8, 1881,   | Bishop A. W. Wayman;   | A. J. Kershaw,<br>Chief Secretary.     |
| 18. | Pensacola,                | Nov. 29, 1882,  | Bishop A. W. Wayman;   | A. J. Kershaw,<br>Chief Secretary.     |
| 19. | Tallahassee,              | Dec. 5, 1883,   | Bishop D. A. Payne;    | A. J. Kershaw,<br>Chief Secretary.     |
| 20. | Marianna,                 | Nov. 26, 1884,  | Bishop D. A. Payne;    | A. J. Kershaw,<br>Chief Secretary.     |
| 21. | Pensacola,                | Nov. 24, 1885,  | Bishop D. A. Payne;    | A. J. Kershaw,<br>Chief Secretary.     |



- | No. | Place of Meeting | Dates           | Presiding Bishop       | Chief Secretaries                    |
|-----|------------------|-----------------|------------------------|--------------------------------------|
| 22. | Tallahassee,     | Nov. 16, 1886,  | Bishop D. A. Payne;    | A. J. Kershaw,<br>Chief Secretary.   |
| 23. | Monticello,      | Nov. 10, 1887,  | Bishop B. W. Arnett;   | A. J. Kershaw,<br>Chief Secretary.   |
| 24. | Quincy,          | Dec. 19, 1888,  | Bishop B. W. Arnett;   | E. W. Johnson, Chief<br>Secretary.   |
| 25. | Pensacola,       | Dec. 19, 1889,  | Bishop B. W. Arnett;   | S. S. Herndon,<br>Chief Secretary.   |
| 26. | Tallahassee,     | Dec. 18, 1890,  | Bishop B. W. Arnett;   | S. S. Herndon,<br>Chief Secretary.   |
| 27. | Quincy,          | Dec. 18, 1891,  | Bishop A. W. Wayman;   | S. S. Herndon,<br>Chief Secretary.   |
| 28. | Apalachicola,    | Jan. 25, 1893,  | Bishop A. Grant;       | S. S. Herndon,<br>Chief Secretary.   |
| 29. | Greenwood,       | Jan. 17, 1894,  | Bishop A. Grant;       | S. S. Herndon, Chief<br>Secretary.   |
| 30. | Monticello,      | Jan. 11, 1895,  | Bishop A. Grant;       | S. S. Herndon, Chief<br>Secretary.   |
| 31. | Tallahassee,     | Jan. 22, 1896,  | Bishop J. C. Embry;    | B. C. Gibbs,<br>Chief Secretary.     |
| 32. | Pensacola,       | Jan. 21, 1897,  | Bishop W. J. Gaines;   | B. C. Gibbs,<br>Chief Secretary.     |
| 33. | Quincy,          | Dec. 15, 1898,  | Bishop W. J. Gaines;   | B. C. Gibbs, Chief<br>Secretary.     |
| 34. | Apalachicola,    | Dec. 14, 1899,  | Bishop W. J. Gaines;   | B. C. Gibbs,<br>Chief Secretary.     |
| 35. | Monticello,      | March 13, 1900, | Bishop James A. Handy; | A. W. Way-<br>man, Chief Secretary.  |
| 36. | Marianna,        | Dec. 12, 1900,  | Bishop James A. Handy; | A. B. Spencer,<br>Chief Secretary.   |
| 37. | Pensacola,       | Dec. 11, 1901,  | Bishop James A. Handy; | A. B. Spen-<br>cer, Chief Secretary. |
| 38. | Tallahassee,     | Dec. 17, 1902,  | Bishop James A. Handy; | A. B. Spen-<br>cer, Chief Secretary. |
| 39. | Quincy,          | Dec. 2, 1903,   | Bishop B. T. Tanner;   | A. B. Spencer, Chief<br>Secretary.   |
| 40. | Tallahassee,     | Nov. 20, 1904,  | Bishop B. T. Tanner;   | S. S. Sciplin,<br>Chief Secretary.   |
| 41. | Monticello,      | Nov. 6, 1905,   | Bishop B. T. Tanner;   | S. C. Sciplin,<br>Chief Secretary.   |
| 42. | Tallahassee,     | Nov. 27, 1906,  | Bishop B. T. Tanner,   | S. S. Sciplin,<br>Chief Secretary.   |
| 43. | Quincy,          | Dec. 4, 1907,   | Bishop M. B. Salter;   | S. S. Sciplin, Chief<br>Secretary.   |



No.	Place of Meeting	Dates	Presiding Bishop	Chief Secretaries
44.	Mt. Olive,	Nov. 24, 1908,	Bishop M. B. Salter;	S. S. Sciplin, Chief Secretary.
45.	St. John,	Nov. 24, 1909,	Bishop M. B. Salter;	S. S. Cciplin, Chief Secretary.
46.	Tallahassee,	Nov. 23, 1910,	Bishop M. B. Salter;	L. D. Johnson, Chief Secretary.
47.	Monticello,	Nov. 29, 1911,	Bishop M. B. Salter;	L. D. Johnson, Chief Secretary.
48.	Quincy,	Dec. 4, 1912,	Bishop John;	L. D. Johnson, Chief Secretary.
49.	Concord,	Dec. 3, 1813,	Bishop John Hurst;	L. D. Johnson, Chief Secretary.
50.	Tallahassee,	Dec. 2, 1914,	Bishop John Hurst,	L. D. Johnson, Chief Secretary.
51.	Monticello,	Dec. 6, 1915,	Bishop John Hurst;	L. D. Johnson, Chief Secretary.
52.	Madison,	December 5, 1916,	Bishop John Hurst,	L. D. Johnson, Chief Secretary.
53.	Quincy,	December 5, 1917,	Bishop John Hurst,	L. D. Johnson, Chief Secretary.
54.	Concord,	December 10, 1918,	Bishop John Hurst;	L. D. Johnson, Chief Secretary.
55.	Monticello,	December 7, 1919,	Bishop John Hurst;	L. D. Johnson, Chief Secretary.
56.	Monticello,	December 8, 1920,	Bishop John Hurst;	C. W. Mayes, Chief Secretary.
57.	Tallahassee,	Dec. 7, 1921,	Bishop John Hurst;	W. N. Mitchell, Chief Secretary.
58.	Madison,	Dec. 6, 1922,	Bishop John Hurst;	I. S. Roundtree, Chief Secretary.
59.	Quincy,	December 8, 1923,	Bishop John Hurst;	W. N. Mitchell, Chief Secretary.
60.	Tallahassee,	Dec. 10, 1924,	Bishop John Hurst;	W. N. Mitchell, Chief Secretary.
61.	Monticello,	Dec. 9, 1925,	Bishop John Hurst;	W. N. Mitchell, Chief Secretary.
62.	Madison,	December 8, 1926,	Bishop John Hurst;	W. N. Mitchell, Chief Secretary.
63.	Tallahassee,	Dec. 7, 1927,	Bishop John Hurst;	W. N. Mitchell, Chief Secretary.
64.	Quincy,	December 5, 1928,	Bishop J. S. Flipper;	W. N. Mitchell, Chief Secretary.
65.	Monticello,	November 6, 1929,	Bishop J. S. Fipper,	W. N. Mitchell, Chief Secretary.



---

No.	Place of Meeting	Dates	Presiding Bishop	Chief Secretaries
66.	Perry,	November 6, 1930,	Bishop J. S. Flipper;	W. N. Mitchell, Chief Secretary.
67.	Tallahassee,	Oct. 28, 1931,	Bishop J. S. Flipper;	W. N. Mitchell, Chief Secretary.
68.	Madison,	November 10, 1932,	Bishop J. S. Flipper,	W. N. Mitchell, Chief Secretary.
69.	Quincy,	November 16, 1933,	Bishop J. S. Flipper;	W. N. Mitchell, Chief Secretary.
70.	Monticello,	Nov. 22, 1934,	Bishop J. S. Flipper;	S. P. Robinson, Chief Secretary.
71.	Tallahassee,	Nov. 21, 1935,	Bishop J. S. Flipper;	S. P. Robinson, Chief Secretary.
72.	Madison,	December 2, 1936,	Bishop R. A. Grant;	S. P. Robinson, Chief Secretary.

## DISCIPLINARY QUESTIONS

1. What Preachers are admitted on trial? Fred Snead, William A. Jones, James Proctor.
2. Who remain on trial? Frank Cooper.
3. What Preachers are admitted or re-admitted? (See Class on Admission Report.)
4. Who are the Deacons? (See roll of Deacons)
5. Who have been elected and ordained Deacons and Elders? No one.
6. Who have located this year? No one.
7. Who have been elected by the General Conference to exercise the Episcopal Office in to Superintend the African Methodist Episcopal Church? Bishops J. S. Flipper, W. H. Heard, W. T. Vernon, W. A. Fountain, R. C. Ransom, J. A. Gregg, R. A. Grant, S. L. Green, G. B. Young, M. H. Davis, N. W. Williams, D. H. Sims, H. Y. Tooks, R. R. Wright, E. J. Howard, W. D. Johnson. (Deceased.)
8. Who are the Supernumerary Preachers? (See roll of Supernumeraries.)
9. Who are the Superannuated Preachers? A. Simpkin, W. W. Washington, A. B. Baker, W. B. Browning, G. B. Williams, Samuel James, M. S. Starks, G. B. R. Grant, S. H. Dubignon.
10. Who have been expelled from the Connection? No one.
11. Who have withdrawn from the Conference and Conference? R. W. Wilder.
12. Are all the Preachers blameless in life and conversation? They have been examined and found so to be.
13. What Members of the Conference have died this year? Revs. G. W. McGhee and I. Bruce.
14. Have all the Preachers subscribed to one of the Connectional Journals and also the Quarterly Review or the Voice of Mission? They have.
15. What Preachers are in debt to the Department? None reported.
16. Where shall we hold our next Annual Conference? Quincy, Fla.
17. When shall we hold our next Session? Date yet to be set.
18. Where are the preachers stationed this year? (See list of Appointments in minutes.



## PROCEEDINGS

## FIRST DAY—MORNING SESSION

Madison, Florida, December 2nd, 1933

The 70th Session of the Florida Conference A. M. E. Church convened in Mt. Zion A. M. E. Church, Madison, Florida, Wednesday morning at 9 a. m. Bishop R. A. Grant presiding.

The Bishop opened the Conference by lining hymn No. 295. "And are we yet alive," which was sung by the congregation. Rev. A. L. Bennett P. E. of the Quincy District, led in a very touching prayer. Seated on the rostrum with the Bishop were the five Presiding Elders of the Conference, Rev. A. I. G. Richardson P. E. of the Tallahassee District read the scripture lesson from the 75th Psalm. The Bishop lined, "Come all who dwell below the sky." Rev. P. E. Daugherty, P. E. of the Perry District recited the Decalogue. The Bishop led in singing, "Down at the Cross," Etc., and lined hymn No. 223, "Amazing grace how sweet the sound," after singing the above number, he lined hymn No. 133, "Come Holy Spirit Heavenly Dove," Etc. The Bishop introduced Rev. W. M. Mitchell to preach the Annual Sermon. Rev. Mitchell asked the Conference to assist him in singing one verse, "Saviour more than life to me." Chose for his text St. Matthew 17th Chapter and a part of the first verse. Reading, And bringeth them up into an high mountain. In which he preached a soul stirring sermon. Then the Conference went into a Conference hand shake led by the Bishop. Concluding the Bishop proceeded with the Holy Communion, assisted by the Presiding Elders. 69 persons communed at the Lord's table. The Secretary was requested to call the Conference roll and each member paid their Conference dues. For Education \$94.00 and for Mission \$93.00.

Organization—The hour having arrived for the organization of the Conference, Rev. S. P. Robinson was elected chief Secretary. Rev. C. H. Dudley was elected Recording Secretary and Rev. S. D. Cooper was elected Statistical Secretary. Rev. R. W. Whitehurst Conference Accountant. On motion by Rev. A. I. G. Richardson and seconded by Rev. H. E. Daniels, same was adopted.

Marshalls Rev. S. Sampson chief Marshall, Revs. A. F. Littles, Joseph Jackson and B. Mitchell assistant.

Conference Bounds—Moved and seconded that the fourth pew in front of the Chancel including the Amen corner. Carried.

Reporters—Rev. J. F. Livingston was elected to the Church papers, and Rev. W. R. Akey to the secular press.



Hours of Meeting—Conference convene at 9 a. m. to 1. Re-convene at 2:00 p. m. Adjourn at will. Moved and seconded that the Committee stand as they are in the Booklet. The finance committee be composed of the five Presiding Elders, H. E. Daniels and G. B. Williams.

Introduction of Visitors—Revs. G. E. Curry, P. E. East Florida Conference, M. W. Williams, P. E.; R. W. Whitehurst, P. E. West Florida Conference; J. S. Johnson, Pastor of Allen Chapel, Pensacola, Florida; J. B. Epperson, Jacksonville, Florida; C. A. Gibbs, Jacksonville, Florida. The Bishop called for the list of lay delegates, beginning with the Tallahassee District, Brothers H. Thompson, D. R. Lincoln and W. M. McCray, Monticello District, Brothers, W. M. Groover, H. C. Collins and E. Jones. Quincy District, Brothers A. D. Paul, M. Curtis, C. H. Henry and Mrs. Rachel Demus. Madison District, Brothers T. Z. Smith, A. G. Coffee and Mrs. Donie Townsend, Perry District, Brothers A. A. McKinnie, M. S. Holt, J. A. Mallory and Vinie Adkin. The Bishop in his cheerful way, introduced to the Conference the following Sisters, namely: Carrie Bowers, R. A. Grant, A. E. Heath, W. M. Akery, Rachel Demus, H. E. Daniels, Bessie Livingston and Janie Lawyer. The Brothers F. T. Tompson, D. . Balloon, Dola Tompson and Rev. A. C. Maxwell, pastor of the M. B. Church. The Bishop called for those that would appear before the class for Admission by District. Tallahassee District No one. Monticello District Brothers Robert Feacher, Fred Snead. Quincy District, Brothers William Jones. L. B. Richardson. Madison District, James Proctor. These paid \$4.50 cents each. Perry District no one.

The Bishop announced one hour for recess, and on the return, would begin calling for reports beginning with the Tallahassee District. The Bishop and Conference repeated the Apostles Creed. Benediction by Rev. W. M. Mitchell.

#### FIRST DAY—AFTERNOON SESSION

December 2nd, 1936

Promptly at 2:00 p. m. the Conference re-assembled with the Bishop R. A. Grant presiding. After singing the Bishop proceeded to call for the Presiding Elders Districts, beginning with the Tallahassee District, Monticello District, Madison District, They submitted their reports. By order of the Bishop the Conference took recess for five minutes.

#### FIRST DAY—EVENING SESSION

December 2nd, 1936

At 7:30 p. m. the Conference re-assembled. Bishop R. A. Grant presiding.

He conducted the Ritualistic Service. First hymn No. 188 "Father I stretch my hand to Thee," etc., which was sung by the Con-



gregation. Rev. B. Zanders led in a very touching prayer. Selection, Rev. A. L. Bennett, P. E. of the Quincy District read for the Scripture lesson the 46th Psalm, and recited the Decalogue. Second hymn No. 290. After inging, the Bishop presented Rev. W. G. Pinkney, who was chosen to preach the Missionary Sermon. Selected his text from St. John 7th Chapter and the latter part of the 37th verse. Reading, "If any man thirst let him come to me and drink." From this text Rev. Pinkney preached a sermon filled with power and the spirit. Selection. "Trying to make 100" concluding the singing. Rev. J. C. Bradley led in a very touching prayer. The directed the offering \$31.32 raised. The Bishop introduced the following visitors: Revs. D. S. Drumon, J. J. Brooks, E. J. Jackson, J. S. Johnson, T. W. Bullard, A. C. Danford, spoke to us bringing greetings from the 6th Episcopal District hwich was enjoyed by all. Rev. S. C. Sasser of Bartow, D. S. Drumon, Rev. J. J. Heath pastor of Bethel A. M. E. Church in St. Petersburg. All spoke well concluding the speaking. Mrs. A. O. Kirksey presented Mrs. R. A. Grant to the Conference, who in turn presented Mrs. E. W. Daniels, who introduced Mrs. J. J. Heath State President of the W. H. & F. M. Society. She gave a splendid talk that was enjoyed by all. Mrs. Daniels announced the contest would come off on Saturday night. Then the Bishop called for the reports of the Perry District. Announcements made, Doxology sung, Benediction by Rév. W. G. Pinkney.

#### SECOND DAY—MORNING SESSION

December 3rd, 1936

At 9:00 a. m. the Conference convened, ith Bishop R. A. Grant presiding.

He conducted the service by singing hymn No. 12, "A Charge to keep I have" Rev. G. J. White led in prayer. The Bishop read for the scripture lesson the 33 Psalm and recited the Decalogue, then led in singing, "I need Thee every hour," The Minutes of the first day, morning, afternoon and evening sessions ere read by the Secretary and adopted with necessary corrections. The accountant and the Finance Committee checked their books satisfactory to the Bishop and Conference. It was moved and seconded that the Dollar Money be collected according to law. It was moved and seconded that the budget method by which we reported this year, will remain the same next year. Revs. J. M. Wise, T. C. Kelly, C. u. Brooks, M. B. of Georgia; L. M. Moore and Rev. Goff of Ga. All spoke words of encouragements, Layman's presented Brothers A. A. McKennie, E. Jones, Prof. W. M. Groover, H. C. Collins, H. Tompson and W. M. McCray. All spoke in high terms, and promised to stand by and support Edward Waters College. Doxology, Benediction by Rev. J. J. Heath.



## SECOND DAY—AFTERNOON SESSION

December 3rd, 1936

At 2 p. m. the Conference re-assembled, Bishop R. A. Grant, presiding.

The Conference joined in singing title "Any Where". The Bishop called for the Committees reports. The finance Committee made their report concerning the Dollar Money. (See proportions in Minutes). The Bishop introduced Revs. Coffee P. E. Foster P. E., and W. P. Mitchell, Pastor of Mt. Zion A. M. E. Church, Jacksonville, Fla. They brought greetings. Brother S. L. Wilkins, gave us a short talk also Rev. E. J. Madison. The Bishop had set this hour as Georgia's hour. And presented Rev. Joseph Green, Mrs. M. V. Green, Rev. T. H. Hudson and Mrs. Mamie H. Hudson. They were given time to speak to the Conference. Their addresses were fraught with good things and much enjoyed. Thees were from Boston, Georgia. At this moment, the Bishop introduced Rt. Rev. H. Y. Tooks, Presiding Bishop of the 12th Episcopal District which comprises the Arkansas and Oklahoma Conferences. After he had made his address, the Congregation was allowed to shake the hand of Bishop Tooks. Prof. Hicks principle of Madison high school was presented.

Hon. D. D. Powell 33rd Grand Master of Masons in the Jurisdiction of Florida was presented and brought greetings. The Conference donated to the Masonic Temple \$16.40 turned the same to Hon. A. L. Lewis, Brother Lewis was then presented, said he was glad to be here and wanted to go and see the place where he was born. Hon. J. H. Lewis was presented President of the Afro-American Insurance Company, said he just wanted to come and see the place where his father was born. The Bishop announced that the Committee on public worship had invited Bishop Tooks, and he would preach on Sunday morning. Doxology. Sung, Benediction by Bishop Tooks.

## SECOND DAY—EVENING SESSION

December 3rd, 1936

The Conference re assembled, Rt. Rev. R. A. Grant presiding.

The choir sung "Holy, Holy, Holy," etc. The Bishop led in prayer. Selection. The Bishop read for the Scripture lesson the 30th Psalm, and recited the Decalogue. Selection by the Choir. Rev. J. B. Epperson was presented by the Bishop, said the Committee has choose him to deliver the message. Rev. Epperson asked the choir and congregation to join in singing three stanzas of "I love thy kingdom Lord." Concluding the singing he choosed his text from St. Matthew 16th Chapter, and part of the 18 verse, reading: "Upon this Rock I build my Church, and the gates of hell shall not prevail against it". Subject: The church on the Rock. Concluding the sermon the Conference went into a song service, led on by Revs. S. Sampson, B.



Zanders and others. The Bishop directed the offering, amount raised \$21.47. The Bishop presented Rt. Rev. H. Y. Tooks, Hon. D. D. Powell 33rd Grand Master of Masons in the Jurisdiction of Florida.

Hon. A. L. Lewis, Chairman of the Board of Directory of the Afro American Ins. Co. Hon. J. H. Lewis, President of The Afro-American Ins. Co. All brought greetings.

Announcements made, the Bishop and congregatoin repeated the Apostles Creed, Doxology sung, Benediction by Rev. J. B. Epperson.

### THIRD DAY—MORNING SESSION

December 4, 1936

Promptly at 9:00 a. m. the Annual Conference assembled, Bishop R. A. Grant presiding.

After devotion the Secretary read the Minutes of the Second Day morning, afternoon and evening sessions and was adopted with necessary corrections. The committee on admission submitted their report. Brothers Wayman A. Jones age 20, Fred Snead age 21 and James Proctor age 25, were admitted on condition by the consideration of the Bishop and Conference and was adopted.

Committees on First year Second year, third year and fourth year studies, made their reports, same was adopted.

Committee on Temperance made their report, Revs. W. R. Aking, E. J. Madison gave short talk on the report concluding. The report was adopted. The Bishop presented Rt. Rev. H. Y. Tooks to speak to the Conference. Bishop Tooks address was full of food for thoughts. He spoke of an ideal minister in many terms. Then the Conference joined in singing "Draw Me Nearer." Hon. D. D. Powell was presented and said a few words. Committee on Finance and Deeds made their reports. The nomination of Trustees. See list of Trustees. The Bishop gave a short talk. Recess, Doxology, Benediction by the Bishop.

### THIRD DAY — AFTERNOON SESSION

December 4th, 1936

At 2:00 p. m. the Annual Conference re-assembled, Rt. Rev. R. A. Grant, presiding.

Rev. W. R. Akery conducted the devotion. First hymn No. 12, "A Charge to Keep I have," Etc. After the singing, Rev. J. T. Wilson led in a fervent prayer. Selection, Rev. W. R. Akery was appointed Conference Superintendent by the Bishop. Every Elder and Deacon are teachers in the Sunday School Sunday morning and were asked to report \$2.00 Two Dollar. The Committee on the State of the Country was heard by Rev. D. H. Hackley and was adopted. The Committee on the State of the Church was read by Rev. W. R. Akery



was adopted by the request of the Bishop the Districts were reviewed. Rev. M. D. Potter, P. E. of the St. Petersburg District was presented. He brought greetings to the Conference. Rev. Joseph Scott name was placed on the Quincy District Rev. E. S. Belvine was presented and said a few words.

Transfers—Revs. T. W. Bullard, L. D. King and A. E. Tanner. All were transferred from the Northeast Conference to the Florida Conference. The Finance Committee turned over to the Missionary Sisters \$246.00. Raised for the Blind \$2.66. Prof. R. R. Wright 3rd was introduced and he spoke concerning the A. M. E. Book Concern and asked the support to the same. By request of the Bishop the Districts were placed in different pews with their Presiding Elder to arrange for making their reports on Education to night. Announcements, Recess.

### THE THIRD DAY—EVENING SESSION

December 4, 1936.

The Annual Conference re-assembled. Rt. Rev. R. A. Grant, presiding.

Singing by the congregation, Rev. B. W. Roberts led in a fervent prayer. Selection, Rev. W. R. Akery read for the Scripture lesson, first Chapter of Joshua. Rev. J. F. Livingston led in the Decalogue.

The Bishop in his address, said many good things that was much enjoyed. It was a master piece. Prof. R. R. Wright 3rd was presented to the Conference and gave a short talk. Grand Master D. D. Powell was presented and spoke words of encouragements. Rev. M. D. Potter, P. E. said many good things. The Bishop directed the offering for Christian Education. Amount raised from the public, \$55.51, from Districts as follows

Tallahassee District .....	\$110.50
Monticello District .....	55.00
Quincy District .....	101.00
Madison District .....	20.00
Perry District .....	49.00

Total Districts .....	335.50
Supplement .....	9.21

344.71

Grand total ..... \$400.22

The Bishop announced tomorrow night the Missionary sisters will give a Lentest here. The congregation repeated the Apostles Creed. Benediction by Rev. A. L. Bennett.



## FOURTH DAY—MORNING SESSION

December 5th, 1936

At 10:00 a. m. the Conference assembled, Rt. Rev. R. A. Grant, presiding.

First hymn No. 12. "A Charge to keep I have," After singing Rev. S. G. Gibbs led in a fervent prayer. Selection, The Minutes of the 3rd Day Mornin, Afternoon and Evening Sessions was read by the Secretary and adopted. The Bishop presented Prof. R. R. Wright 3d, he spoke concerning the Christian Recorder, and gave information how secure subscribers for the same. This young man is the son of the Rt. Rev. R. R. Wright, Preiding Bishop of the 15th Episcopal District. Rev. Frank Bradley read the statements from the Church Extension Society, stating th principles and interest due the Church Extension. Rev. G. E. Curry was presented by the Bishop, said he ordered Doctor Curry to Jacksonville to witness the recital. Rev. Curry gave a statement of E. W. C. and the work being done since the coming of Bishop Grant to Florida. The Bishop aid many encouraging words, giving information about E. W. C. that was very helpful. Doxology sung. Benediction by the Bishop.

## FOURTH DAY—AFTERNOON SESSION

December 5th, 1936

At 3:15 p. m. the Conference re-assembled. Bihop R. A. Grant, presiding.

Sung hymn No. 12, "A Charge To Keep I Have, Etc."

## RESOLUTIONS

Resolution by Rev. W. R. Akery, J. F. Livingston and H.E.Daniels were read and adopted. Concluding the Disciplinary Questions, asked gy the Bishop and answered by the Secretary. The Committee on Memoirs read their report. They reported the death of Rev. G. W. McGhee, recommend Rev. G. W. Hill to speak on his life and death. And the death of Rev. I. Bruce, they recommend Rev. E. Hill to speak on his life and death. Rev. G. E. Curry spoke on the life and death of Rt. Rev. W. D. Johnson. Bishop Brant lifted his audience with his eloquence. He asked this question where are you going from here? The matter concerning the Church at Wauchulla be left in the hands of the P. E.. By request of the following Brethren they were placed on the list of Superanuated, Revs. G. B. Williams, Samuel James, M. S. Starks, G. B. R. Grant, S. H. Dubignon.

The Bishop asked every Minister to meet his Presiding Elder Monday after the 2nd Sunday in February and pay over their Founder's Day Money. The ame applies to Easter and Children's Day. As a Resolution that was passed in the State Sunday School meeting at West Palm Beach that on Watch Night the young people be given 2 hours with a program for E. W. C. Moved and seconded that the Con-



ference give Rev. K. S. Dupont a Scholarship in Edward Waters College. Thus the 70th Session go down in history as being one of the best, in every point of view held in the Florida Conference. Peace and harmony prevailed throughout the session. Doxology sung. Benediction by the Bishop.

(RT. REV.) R. A. GRANT, D. D. Presiding Bishop.

(REV.) S. P. ROBINSON, Secretary.

### FIFTH DAY—SUNDAY MORNING

#### Annual Conference Sunday School

December 6th, 1936

The Annual Conference Sunday School convened in Mt. Zion A. M. E. Church, at 9:00 a. m.

Rev. W. R. Akery, pastor of Bethel A. M. E. Church, Tallahassee, was appointed Superintendent of the Sunday School by the Bishop. The regular opening of the School was conducted by Rev. Akery. There were 112 Teachers appointed by the Superintendent to take care of their classes. They were given one hour. The contribution for the Sunday was \$110.02. Of said amount, \$10.00 was given to Mt. Zion Sunday School. \$5.00 to Rev. S. H. Dubignon, \$5.00 to Rev. W. B. Browning and \$5.00 to Mrs. Mary Haynes.

RT. REV. R. A. GRANT, Presiding Bishop.

REV. W. R. AKERY, Conference S. School Supt.

REV. S. P. ROBINSON, Conference Secretary.

### SUNDAY—MORNING SERVICE

Madison, Florida, Dec. 6th 1936

At 11:30 a. m. the Annual Conference assembled in Mt. Zion A. M. E. Church, Bishop R. A. Grant, presiding.

Selection by the choir, Rev. J. Verett led in a touching prayer. Selection. The Bishop read for the scripture lesson the 87th Psalm, Rev. I. S. Roundtree, P. E. of the Monticello District led in the Decalogue. Singing at this point an offering was asked for. Amount raised \$40.30. Bishop Grant speaking in high terms of the Conference, presented Rt. Rev. H. Y. Tooks, of the 12th Episcopal District, Bishop Tooks told of the respects he had for his home Conference. Said many things that was helpful through his preliminaries. Text: "I know in whom I believed, Etc." Subject: God, Religion and Love.

Bishop Tooks preached a soul stirring sermon. Selections, Grand Master Powell, and Prof. R. R. Wright told us good bye. The Bishop read Joshua 1st Chapter. Then lined, Go preach my Gospel saith the Lord," and was sung by the vast congregation.



## CENTRAL CONFERENCE TRANSFERS

Revs. G. J. White, T. W. Bullard, A. E. Tanner and W. R. Akery were transferred from the Florida to the West Florida Conference.

Revs. I. S. Roundtree and P. E. Daugherty were transferred from the Florida Conference to the N. East Conference. Then proceeded to read the appointments. Concluding the reading, Doxology sung. Benediction Bishop H. Y. Took.

## COMMITTEES

PUBLIC WORSHIP—Bishop R. A. Grant, C. H. Burgess, S. D. Cooper.

ADMISSION—Revs. C. H. Dudley, S. P. Robinson, J. H. Reshard, H. K. Robinson, W. G. Pinkney, J. C. Bradley, J. W. Branton, J. B. Branch.

FIRST YEAR STUDIES — Revs. D. H. Hackly, Wm. Mitchel, J. L. Anderson, R. B. Brooks, W. B. Browning, B. Alexander.

SECOND YEAR STUDIES — Revs. G. W. Hill, J. F. Livingston, C. H. Burgess, A. I. G. Richardson, P. E. Daugherty, I. S. Roundtree, G. W. Goines, C. J. Reed, G. W. Jones.

THIRD STUDIES — Revs. J. F. Livingston, J. L. Wilson, C. T. Sykes, E. Nathan, S. D. Cooper, G. J. White, S. C. Caldwell, L. H. Johnson.

FOURTH STUDIES — Revs. H. E. Daniels, W. R. Akery, A. I. G. Richardson, P. E. Daugherty, A. L. Bennett, C. H. Burgess, I. S. Roundtree, G. B. Williams, G. B. R. Grant.

A. C. E. LEAGUE—Revs. I. Twiggs, W. B. Browning, A. B. Cowart, H. M. Underwood, A. L. Stockton, W. M. Wilson, H. Montgomery, H. Hampton, A. Littles.

TEMPERANCE—Revs. W. M. Mitchell, J. T. Wilson, J. C. Bradley.

## MISSIONS—

EDUCATION—Rev. J. F. Livingston.

STATE OF THE CHURCH—Rev. W. R. Akery.

STATE OF THE COUNTRY — Rev. D. H. Hackley.

EDUCATION AND MISSION FUND—

DOLLAR MONEY—Rev. G. B. Williams.

CONFERENCE CONTINGENT—Rev. E. Nathan, A. V. Moore, I. Hackley, H. D. Davis, T. E. Yant, B. Zanders, R. Bradwell, (Layman), H. Thompson, Wm. McCray.

EASTER DAY FUND — Revs. H. D. Davis, H. Hampton, S. H. Dubignon, W. C. Bishop, H. W. Blake, M. Peck, I. Bruce, S. Stewart, R. B. Bowen.



PARENT HOME AND F. MISSION FUND—  
IMPROVEMENT FUND—

EDUCATIONAL FUND (Personal) Revs.—

PENSION FUND — Revs. H. J. Jones, J. W. Branton, H. Lewis,  
S. P. Hooks, (Layman) Wm. McCray.

MINUTE MONEY—Revs. D. H. Hackley, A. I. G. Richardson, P.  
E. Daugherty, C. H. Burgess, I. S. Roundtree, A. L. Bennett.

SEMINARY FUND—Revs. G. J. White, M. Peck, S. Sampson, T.  
B. Carr, H. Jones, J. C. Bradley, K. S. Perry, J. H. Fulgeon, K. S. Du-  
pont, (Layman), N. B. Beilemy, (Mrs. Donie Townsend and Manuel  
Curtis.

CHILDREN'S DAY FUND—Revs. S. P. Hooks B. B. Brooks, D. J.  
Jackson, I. Twiggs, B. L. Mitchell, A. Parish, G. Dean, H. Montgom-  
ery, A. Simpkins, D. V. Wilson, (Layman), A. G. Coffee and Willie  
Stevens. Student fund.

ENDOWMENT DAY FUND—Revs. S. G. Gibbs, A. I. G. Richard-  
son, W. H. Diggs, A. Littles, W. A. Adams, J. Auston, H. L. Anderson.

W. H. & F. M. FUND—Revs. G. W. Jones, J. Mayo, S. P. Miller,  
T. B. Carr, T. E. Zant.

BIBLE CAUSE—Revs. M. S. Starks, J. Verett, R. V. Scott, S. P.  
Wheeley, H. Dayly, J. Groover, B. J. Mack, J. E. Peeples, G. W. Wil-  
liams, A. Golden.

DOLLAR ALLEN C. E. LEAGUE FUND—Revs

MAY DAD FUND—Revs. G. W. Hill, I. Scott, M. S. Starks, S.  
M. Scott, A. Bing, A. J. McKennie and W. M. McCray.

GEN'L CONFERENCE DELEGATE FUND—Revs. W. R. Akery,  
J. F. Livingston, S. D. Cooper, S. C. Caldwell, A. Bing, R. Bradwell.

ALLEN LEAGUE FUND FOR E. W. C.—Revs. G. W. Goines, P.  
E. Oaugherty, H. D. Davis, C. J. Reed, E. Taylor, S. James, A. J. Mc-  
Kinnie.

BROTHERHOOD FUND—

THE S. S. FOR E. W. C.—Revs.

W. H. & F. MISSIONARM SOCIETC E. W. C. —

SINKING FUND FOR E. W. C.—

PERIODICALS—Presiing Elders.

DEEDS AND ABSTRACTS—Revs. J. H. Reshard, H. K. Robinson,  
G. W. Hill, G. W. Williams, S. Neely, J. C. Bradley, Jr. A. Saunders.

STATIONS, CIRCUITS AND MISSIONS—Revs. I. S. Roundtree,  
A. I. G. Richardson, P. E. Daugherty, A. L. Bennett, C. H. Burgess,  
G. B. R. Grant.

PRESIDING ELDERS ASSESSMENTS—Revs.

UNOCCUPIED TERRITORY—

PUBLICATION DEPARTMENT—

NOMINATION OF TRUSTEES OF E. W. C.—

JUDICIARC—Revs.



- RESOLUTIONS—Revs.  
 MEMOIRS—Revs. H. E. Daniels, G. W. Goines, J. H. Reshard, J. L. Miller, G. W. Jones. ”  
 SPECIAL FEATURES—Revs.  
 ANNUAL SERMON—Revs. W. M. Mitchell,  
 MISSIONARY SERMON—Rev. G. W. Pinkney.  
 EDUCATIONAL MEETING—  
 TO CONDUCT ANNUAL CONFERENCE S. SCHOOL—Rev. W. R. Akery.  
 TO CONDUCT ANNUAL CONF. A. C. E. LEAGUE—Rev.  
 TREASURER CONF. MISSIONARY FUND—Rev.  
 LOCAL CHURCH EXTENSION—Revs. J. L. Miller, C. H. Burgess, A. L. Bennett, P. E. Daugherty, G. J. White, A. I. G. Richardson, I. S. Roundtree.  
 TRIERS OF APPEALS—Revs.  
 CONFERENCE SUPT. OF SUNDAY SCHOOLS—Revs.  
 CONFERENCE PRESIDENT OF A. C. E. LEAGUES.  
 CONFERENCE HISTORIAN—Rev.  
 TO PREPARE REPORT ON STATE OF THE CONFERENCE—Rev.  
 TO PREPARE REPORT ON STATE OF THE CHURCH—Rev.  
 MINISTERIAL EFFICIENCY—Revs. J. F. Livingston, D. H. Hackley, W. R. Akery, E. Nathan, C. N. Dudley, G. B. Williams, J. L. Miller, S. D. Cooper.  
 SUMMER SEMINAR—Rev.

## COMMITTEE REPORTS

### ADMISSION

Madison, Fla. December 4th, 1936

To the Bishop and Members of the Florida Annual Conference

We your Committee on class of admission submit this as our report.

We have had before us the following Brothers: Wayman A. Johnson, age 20, Fred Snead age 20, and James Proctor age 25. We have examined them as per Book of Discipline and found them in possession of some of the books and have some knowledge of the same. We asked that they be admitted on condition by the consideration of the Bishop and Conference.

Your Committee

C. H. DUDLEY, Chairman.  
 S. P. ROBINSON,  
 H. K. ROBINSON  
 J. C. BRADLEY  
 J. H. RESHARD  
 W. G. PINKNEY, Secretary.



**FIRST YEAR STUDIES**

Madison, Florida, December 4th, 1936

To the Bishop and Members of the Florida Annual Conference:

We the Committee on First year studies submit our report. We have no student in this class, to come before the Committee.

Yours,

D. H. HACKLEY,  
W. M. MITCHELL  
JAMES ANDERSON  
W. B. BROWNING  
B. ALEXANDER

**SECOND YEAR STUDIES**

Madison, Fla., December 4th, 1936

To the Bishop and Members of the Conference:

We the Committee to examine officers on the Second Year Studies beg to submit this our report. We have had before us the following Brothers: William H. Fostson, Henry Armstead, Benjamin F. Hooks. We proceeded to examine them as per Discipline, but to our regret, we found them not in possession of the Brooks. We therefore recommended that these Brethren remain in Second Years Class until they qualify as per Discipline,

Respectfully Submitted

I. S. ROUNDTREE

P. E. DAUGHERTY	C. H. BUDGES
A. I. G. RICHARDSOS	G. W. GOINS
G. W. HILL	C. J. REID

**THIRD YEAR CLASS**

To the Bishop and Members of Conference:

We your Committee appointed to examine applicants for the Third Year Studies submit the following as our report.

We have had before us the following name Brethren:

Brothers, I. S. Bradley, Shellie Neaby, A. W. Sanders, M. E. Roberts, John Grover, K. S. Dupont, Henry Dayley, Joseph Jackson, George B. Chambers, and brother Jacob Auston.

We have examined them as per Discipline and find them not in possession of the book nor a fair knowledge of same. We therefore recommend that they remain in their studies another year.

Your Committee

E. NATHAN

J. T. WILSON  
C. T. SIKES  
G. J. WHITE  
J. F. LIVINGSTON



**FOURTH YEAR CLASS**  
**Mt. Zion A. M. E. Church**

Madison, Florida, Dec. 4, 1936

To the Bishop and Conference: We your Committee on the Fourth Year Class beg leave to submit the following as our report.

We have had before us the following named Brothers: Allen Littles and Brother H. Johnson. The class as a whole failed to satisfy the Committee as to their preparedness. The committee therefore recommended that the brothers remain in the Class.

Your Committee  
 H.E. DANIELS, Chairman,  
 A. L. BENNETT  
 P. E. DAUGHTRY  
 I. S. ROUNDTREE  
 A. I. G. RICHARDSON  
 I T. BUDGIES  
 W. R. AKERY,

**REPORT OF FINANCE COMMITTEE**

Madison, Florida, December 5, 1936

To the Bishop and Members of the Florida Annual Conference Greetings:

We your Finance Committee submit the following as our report.

**RECEIPTS DOLLAR MONEY**

Tallahassee D istrict .....	\$542.25
Monticello District .....	346.25
Quincy District .....	575.25
Madison District .....	356.75
Perry District .....	293.50
Total Dollar Money received .....	\$2114.00

Seminar Fund, Tallahassee District .....	18.00
Seminar Fund, Monticello District .....	8.50
Seminar Fund Quincy District .....	13.00
Seminar Fund, Madison District .....	15.50
Seminar Fund, Perry District .....	13.00

Total ..... 68.00

Contingent Fund, Tallahassee District .....	\$ 64.25
Contingent Fund, Monticello District .....	36.70
Contingent Fund, Quincy District .....	56.50
Contingent Fund Madison District .....	56.00



Contingent Fund, Perry District .....	41.00
---------------------------------------	-------

Total .....	\$254.45
-------------	----------

Allen's Day, Tallahassee District .....	\$ 12.00
Allen's Day Monticello District .....	13.00
Allen's Day, Quincy District .....	19.00
Allen's Day, Madison District .....	14.50
Allen's Day, Perry District .....	10.00

Total .....	\$ 68.50
-------------	----------

Founders Day, Tallahassee District .....	8.00
Founders Day, Monticello District .....	5.50
Founders Day, Quincy District .....	13.00
Founders Day, Madison District .....	4.50
Founders Day, Perry District .....	3.00

Total .....	\$ 33.50
-------------	----------

#### WOMANS HOME AND FOREIGN MISSION FUND

Womans Home Tallahassee District .....	\$ 46.00
Womans Home Monticello District .....	33.00
Womans Home, Quincy District .....	31.00
Womans Home, Madison District .....	48.60
Womans Home, Perry District .....	41.00

Total .....	\$ 199.60
-------------	-----------

#### MAY DAY

May Day, Tallahassee District .....	\$ 200.50
May Day, Monticello District .....	99.50
May Day, Quincy District .....	360.00
May Day, Madison District .....	140.00
May Day, Perry District .....	110.00

Total .....	\$ 890.00
-------------	-----------

#### EDUCATIONAL PERSONAL

Tallahassee District .....	\$ 1.00
Monticello District .....	7.50
Quincy District .....	5.00



Madison District .....	3.00
Penson District .....	3.00

Total ..... \$19.50

## EASTER DAY

Tallahassee District .....	21.00
Monticello District .....	29.96
Quincy District .....	20.00
Madison District .....	31.50
Perry District .....	20.50

Total ..... \$114.96

## PARENT HOME AND FOREIGN MISSION FUND

Tallahassee District .....	\$ 8.00
Monticello District .....	4.00
Quincy District .....	3.00
Madison District .....	7.00
Perry District .....	4.00

Total ..... \$ 26.00

## MINUTE MONEY

Tallahassee District .....	\$ 27.30
Monticello District .....	21.60
Quincy District .....	24.50
Madison District .....	18.30
Perry District .....	12.25

Total ..... \$103.95

## EDWARD WATERS BUILDING FUND

Tallahassee District .....	\$ 10.00
Monticello District .....	4.50
Quincy District .....	13.00
Madison District .....	1.00
Perry District .....	3.00

Total ..... \$ 31.50

## CHILDREN'S DAY FUND

Tallahassee District .....	\$ 18.00
Monticello District .....	14.00
Quincy District .....	18.20
Madison District .....	23.50
Perry District .....	18.00

Total ..... 91.70



## STUDENT FUND

Tallahassee District .....	\$ 13.20
Monticello District .....	13.20
Quincy District .....	14.40
Madison District .....	10.80
Perry District .....	13.20
<b>Total .....</b>	<b>\$ 64.80</b>

## IMPROVEMENT FUND

Tallahassee District .....	8.00
Monticello District .....	
Quincy District .....	11.00
Madison District .....	4.00
Perry District .....	3.00
<b>Total .....</b>	<b>26.00</b>

## ENDOWMENT DAY

Tallahassee District .....	\$291.00
Monticello District .....	125.00
Quincy District .....	270.00
Madison District .....	250.00
Perry District .....	192.00
<b>Total .....</b>	<b>\$1128.00</b>

## PENSION FUND

Tallahassee District .....	\$ 13.00
Monticello District .....	7.00
Quincy District .....	13.00
Madison District .....	9.75
Perry District .....	6.50
<b>Total .....</b>	<b>\$ 49.25</b>

## BIBLE CAUSE

Tallahassee District .....	8.00
Monticello District .....	11.00
Quincy District .....	12.00
Madison District .....	10.55
Perry District .....	7.50
<b>Total .....</b>	<b>49.05</b>

## A. C. E. LEAGUE DEPARTMENT

Tallahassee District .....	8.00
Monticello District .....	12.00



Quincy District .....	11.00
Madison District .....	11.00
Perry District .....	11.00
<b>Total .....</b>	<b>\$ 53.00</b>

## A. C. E. LEAGUE EDWARD WATERS COLLEGE

Tallahassee District .....	9.00
Monticello District .....	10.00
Quincy District .....	9.00
Madison District .....	9.00
Perry District .....	10.00
<b>Total .....</b>	<b>\$ 47.00</b>

## GENERAL CONFERENCE DELEGATE FUND

Tallahassee District .....	53.50
Monticello District .....	29.00
Quincy District .....	47.00
Madison District .....	27.00
Perry District .....	21.00
<b>Total .....</b>	<b>\$177.00</b>

## BROTHERHOOD

Tallahassee District .....	\$ 30.00
Monticello District .....	10.00
Quincy District .....	34.00
Madison District .....	22.00
Perry District .....	8.00
<b>Total .....</b>	<b>\$ 104.00</b>

## SUNDAY SCHOOL E. W. C.

Tallahassee District .....	9.00
Monticello District .....	2.00
Quincy District .....	8.00
Madison District .....	2.00
Perry District .....	2.50
<b>Total .....</b>	<b>\$ 23.50</b>

## MISSIONARY SOCIETY E. W. C.

Tallahassee District .....	8.00
Monticello District .....	1.00
Quincy District .....	7.00
Madison District .....	2.00



Perry District .....	2.00
Total .....	\$ 20.50

## SINKING FUND

Tallahassee District .....	7.50
Monticello District .....	1.50
Quincy District .....	8.00
Madison District .....	2.00
Perry District .....	2.00
Total .....	\$ 20.50

## ATHLETICS

Tallahassee District .....	8.00
Monticello District .....	
Quincy District .....	7.00
Madison District .....	3.00
Perry District .....	2.00
Total .....	\$ 20.00

## MUSIC

Tallahassee District .....	7.00
Monticello District .....	
Quincy District .....	3.00
Madison District .....	3.00
Perry District .....	2.00
Total .....	\$ 15.00

Public Collection .....	\$ 64.76
Public Collection .....	31.32
Public Collection .....	16.40
Public Collection .....	21.47
Public Collection .....	2.66
Public Collection to Conference Treasurer .....	813.86
Public Collection to Conference Treasurer .....	178.00
Public Collection to Conference Treasurer .....	57.48
To Conference Treasurer .....	45.85
	\$1,095.19

## DISBURSEMENT

38% Dollar Money to J. R. Hawkins .....	\$ 803.31
25% Dollar Money Pension Fund .....	528.50



8% To Secretary of Education .....	169.12
5% To Secretary of Missions .....	105.70
4% To Secretary of Church Extension .....	84.56
20% To Annual Conference .....	422.85

Total Dollar Money .....\$2,114.00

To A. I. G. Richardson .....	50.00
To Bishop Allowance .....	100.00
To Printing .....	163.75
To Ira T. Bryant .....	115.50
To Conference Treasurer .....	813.86
To Conference Treasurer .....	57.48
To Conference Treasurer .....	45.85
To S. P. Roberson, Chief Secretary .....	15.00
To S. D. Cooper, Statistical Secretary .....	7.50
To C. H. Dudley, Recording Secretary .....	7.50
To R. W. Whitehurst, Accountant .....	25.00
To Maonic Temple in Jacksonville .....	16.40
To A. Blind Man .....	2.66
To Lunch .....	8.00
To Stamps and Postage .....	3.68
To Visitors .....	42.00
To Rev. G. E. Curry .....	20.00
To Paid on Note .....	178.00
To Mrs. M. E. Grant .....	30.00
To Mrs. A. E. Heath .....	5.00
To Freight Bill .....	4.50
To Rev. S. D. Cooper Con-intertainment .....	150.00
To Bishop H. Y. Tookes .....	50.00
To Extra Conference Expense .....	85.00
Recapitulation Grand Total Collected .....	\$1,095.19

Grand to Disbursement .....\$1,095.39

Balance ..... .70

Collected in Sunday School, Sunday A. M. ....

Public Collection, Morning Service .....

Respectfully Submitted

Your Committee

REV. A. I. G. RICHARDSON

REV. I. S. ROUNDTREE

REV. P. E. DAUGHTERY

REV. C. H. BURCHES

REV. A. I. BENNETT

REV. G. B. WILLIAMS

REV. H. E. DANIELS, Secretary.



Rt. Rev. R. A. Grant .....	\$ 2.00
A. I. G. Richardson .....	2.00
G. E. Curry .....	2.00
A. L. Bennett .....	2.00
W. M. Mitchell .....	2.00
C. H. Burgess .....	2.00
H. E. Daniel .....	1.00
I. S. Roundtree .....	2.00
P. E. Daugherty .....	2.00
J. H. Richard .....	1.00
G. W. Hill .....	1.00
E. Nathan .....	1.00
R. W. Whitehurst .....	2.00
Mrs. W. R. Akery .....	1.00
Ella W. Daniel .....	1.00
Rachel Demos .....	1.00
A. F. Littles .....	1.00
W. R. Akery .....	2.00
W. A. Jones .....	1.00
S. H. Gibb .....	.50
E. Hill .....	.50
I. F. Braley .....	.50
Henry Amtead .....	
J. L. Wilson .....	1.00
S. D. Cooper .....	1.00
W. H. Foster .....	.25
W. M. McCray .....	1.00
B. W. Robert .....	1.00
D. J. Jackson .....	1.00
J. B. Epperson .....	1.00
.... Wallow .....	.50
G. Dean .....	1.00
A. Hanson .....	1.00
B. J. Mack .....	.50
S. Samon .....	.50
A. V. Moore .....	1.00
J. B. Branch .....	1.00
Prof. Wm. Groover .....	.25
C. A. Gibbs .....	2.00
A. W. Saunders .....	.50
J. C. Bradley .....	1.00
G. W. Williams .....	1.00
C. . Reed .....	1.00
C. T. Sikes .....	1.00
L. Richards .....	.25



D. V. Wilson .....	.25
H. Hampton .....	.25
I. Twiggs .....	1.00
C. H. Dudley .....	1.00
R. Bardwell .....	50.00
J. W. Branton .....	.50
J. J. Jackson .....	.50
J. H. Procte .....	.25
R. Feather .....	.50
W. C. Bishop .....	.50
J. S. Johnson .....	2.00
A. Bing .....	.50
John Groover .....	.50
I. Hackley .....	1.00
J. F. Livingston .....	2.00
S. P. Robinson .....	1.00
<b>Total</b> .....	<b>\$ 60.50</b>

### EDUCATION

Madison, Florida, December 4, 1936

To the Bishop and Members of the Florida Annual Conference:

We your Committee on Education beg to submit this as our report:

It is needless for me to attempt here to define the word Education, but I must say the present day Educational system of our state and nation has done much, but it has not yet achieved the largest success.

The schools which are training individuals for life and citizenship must do their work to the fullest degree, not only must they furnish intellectual or academic training but also they must afford preparation for social living, for industrial efficiency, for good citizenship, and for world service. This applies to all kinds of schools but most especially to our church schools.

Education we may say means the survival not of the fittest, but of the best, in morals it kills the weeds of vice and weakness, so that the flowers of virtue and strength may have room to grow Education cuts off waste and intensifies concentration, Education dignifies the human race, above all true Education refines the mind, purifies the soul against superstition and evil. Life becomes wonderfully beautiful when we look at it and can brush aside the trivial cares, sorrows and failures and say, "They don't count." They are not the real things of life; There is something within me, my individuality, that makes all these seem too trifling for me to permit them to have any dominion over me. The man who is truly educated looks truth and honesty



so straight in the face that he has no consciousness of intrigue. He is deaf to the hints and whisperes of wrong that a suspicious nature would suspect even before they existed.

Education in a character is like the needle of a compass, it knows only one point, its ideal, in this industrial age one must ge prepared to meet the demands of life. The great need of to day is an educational system that concerns the whole life; the intellectual, the moral, the emotional, and the spiritual.

Let us continue to encourage that type of education that lts one for an abundant life. Let us keep the door of opportunity open before our race, Let us strive to perpetuate an educational system in our Church schools, especially in our own E. W. C. which shall afford the highest type of christian training that a man may see and know that he has two creators — his God and himself. His creator furnishes him the raw material of his life and the laws in conformity with which he can make that life what he will. His second creator, himself, has marvellous powers he rarely realizes. It is what man makes himself that counts in this life, and when a man fails in life he usually says, 'I am a sGod made me,' when he succeeds he proudly proclaims himself "a self-made man." Man is placed into this world not as a finality, but as a possibility, man in his weakness is the creature of circumstances; Man in his strength is the creator of circumstances, whether he be victim or victor depends largely on himself.

We are living in a progresive age, hence our training should not be artificial our training should be in keeping with life's activities. Life is learned by living therefore learning how to live, to use one's facilities, to perform simple daily tasks intelligently, is a vital part of our education.

Training enables one to see to compare, to detect, likeness and difference. The hand sholud be trained to follow the eye and obey its behest, the will should be disciplined to pursue a thought without wavering. It is the duty of the Government and State and Church in particular to provide such training as will enable the youth to make life's adjustments properly.

Not only must people be called to erve in the kingdom and actualy make the kingdom come, but they should be trained for kingdom service. In this respect much of our modern religion is impotent and sibility in this modern day. Urgent is the demand, great is the need, for Christian education. This our Edward Waters College has been men and women into various walks of life and lines of endeavor with minds that thinks, hands that work, and hearts that love.

J. F. LIVINGSTON



## MEMOIRS

Madison, Florida, 12, 6, 1936.

To the Bishop and Members of the Florida Annual Conference Greetings:

We your Committee on Memoirs submit our report. Since the close of our last session the grim reaper death has envaded our ranks and taken from us, two of our Ministers:

(First) Rev. G. W. McGee, he have served in this Conference many years and was a very active and progressive Minister. He was a very faithful , pastor and a good revivalist. Many was added to our Church, during his pastorate. Several years ago, he retired from the ,ctive Ministry and was a Superanuate at the time of his death. He died in the month of February 1936. We recommend that Rev. G. W. Hill speak of his life and labors.

(Second) Rev. I. Bruce at the time of his death was pastoring New England Mission. Rev. Bruce was known as the Missionary Preacher he did not aspire for any great appointment, but was a faithful Minister with a very kind and lovable disposition. We recommend that Rev. E. Hill speak of his life and labors. Bishop W. D. Johnson, D. D., Presiding Bishop of the Seventh Episcopal District comprising South Carolina was called from labor to reward June 1936. Bishop Johnson was a great and strong leader of men; after many years as pastor, Presiding Elder and Bishop. He did his work well. He cased his sword to fight no more.

Your Committee

H. E. DANIELS

J. H. ROCHARD

S. P. MILLER

G. W. HILL.

## TEMPERANCE

Madison, Florida, December 4, 1936

To the Bishop and Members of the Florida Annual Conference, now in session, we the Committee appointed to write on "Temperance".

Although Temperance is being constantly taught in Sunday Schools and various religious organizations, it has, seemingly, lost its significance to the present day world.

We call ourselves christians, yet the majority of us do not realize that it is ones individual duty to conduct himself in such a way as to be able to say "Not Guiltip" when christ comes. Christians must be decent. They set examples for others to follow. Therefore they must live so that othrs may be able to say they are worthy to be followed.

Christians must recognize government. Their aims should be to make themselves law abiding citizens and to devote themselves to the duties of citizens. If this were practiced there would be less crime, less suffering among inhabitants of the civilized world.



"It is not good to eat flesh and drink wine excessively. Drunkenness is not only the cause of crime, but it is crime itself. When one is overcome by strong drink, he loses all reason. In this state of mind he represents intemperance in all its forms.

The only way to escape the danger in strong drink is not to indulge in drinking.

Whisky has injured millions.

IT NEVER HELPS. LET IT ALONE.

Committee,

REV. N. W. MITCHELL

T. W. WILSON

J. C. BRADLEY

### REPORT ON STATE OF THE COUNTRY

Greetings:

We the Committee on the State of the Country beg to make the following as our report. Our country in which we live is a religious country and depends on the guidance of the Holy spirit.

We are thankful to say that we are in peace and not war, while To the Bishop and Members of the Florida Annual Conference other nations are shedding blood seemingly seeking peace and preparing for a greater war.

#### Financial Condition

Our country has plenty of money, clothes and food. We have a full supply of every need, and no one need to suffer. Our old people above seventy years are drawing old age assistance each month on an average of five to thirty dollars which we feel is a God send blessing. Our banks report shows that they are in a prosperous condition.

#### The Educational Condition

Education is the greatest of all times, opportunities are being given as never before. Students are being payed six and ten dollars per month, and other scholarships to encourage education. The growth of the public school system is one of the wonder stories of American history.

Only fifty years ago the enrollment in all schools, public and private was eleven million chiefly in the elementary grades. Today it is thirty million chiefly in the elementary grades. High school enrollment has grown from a quarter of a million pupils in 1880 to seven million in 1936. Over a million teachers are now engaged in America's task of education. Public sentiment has been crystalized in favor of better educational advantages for negroes. Much of the improved public sentiment and increased expenditures were due to the influence of large educational foundation and trust funds, beginning with the Slater and Peabody funds followed by the southern education



movement, The General Education Board, The Anna T. Jeans fund, the Phelps Stokes fund and the Julius Rosenwald fund. Which is a God sent blessing especially to our race.

#### Spiritual Conditions

Spiritual conditions are still holding its own and the souls of men continue to long for God. Whether this has been expressed in words or not, there is a deep sense of spiritual need and a heart yearning after God regardless of conditions. We have some old as well as young that get comfort and joy in the christian life. Men and women hearts are stirred to its depth when it grasps the wondrous privilege of being a co-worker with Christ in saving souls at home and in the world wide field.

#### Florida

We are thankful to the Lord and the General Conference for sending our own RT. REV. R. A. GRANT to Florida. We feel safe to say Florida is safe with a philosophical genius and a Godly spirit, contrite heart believing true and clean. Echoes are being heard all over Florida that the A. M. E. Church and E. W. C. is safe in his hands.

Humbly submit,

D. H. HACKLEY,

#### STATIONS, CIRCUITS AND MISSIONS

To the Bishop and Members of the Florida Conference:

We your Committee on Station Circuits and Missions, beg to submit this as our report. The Committee recommend that the Station Circuit and Missions remain the same as they are.

Your Committee

E. NATHAN,

#### STATE OF THE CHURCH

##### Mt. Zion A. M. E. Church

Madison, Florida, December 4, 1936

To the Bishop, Rt. Rev. R. A. Grant, D. D. L. L. D. delegates of this the Seventeenth Annual Session of the Florida Conference, Visitors, ladies and gentlemen, greetings:

I have been requested to write a paper on this very important subject: "The State of the Church." We might ask; what is the Church? Mr. Hurst in his "Short History of the Christian Church," says that the visible Church consists of organized believers in Christ and followers of his life. And another adds, "Where the sacraments are duly administered."

##### I. State of The Church Temporarily.

Under this sub-topic, we may take a survey of all that pertains to the Church in a temporal way.



(a) Economically: With the pressure of the depression, which has made itself felt practically throughout the world, and has had to do with every phase of activity and economical interest, the Church: though at a slow pace, has continued to increase its possessions with the erection and remodeling of a few Church-buildings every here and there. Our branch of the Christian Church has shared in this endeavor.

Our parochial schools, though somewhat retarded, have in the main kept their doors open. And in Florida; our own "Edward Waters College," under our matchless leader-Bishop R. A. Grant supported by our friends, and the loyal sons of Allen, is not merely keeping her doors open, but when you take a survey of all conditions surrounding her, you will confess that She is pushing forward by leaps and bounds.

(b) Financially: This twin sister to economics, the sister that controls the pulse, or the economical thermometer, is of vast importance to the state of the Church. Although the Church is doing a herculean job, we must confess that the financial status of the Church is far below par with her needs. One of the crying needs of the Church is Money. When God instituted the Church, He then instituted her financial system-Tithing. Like many of His commandments, tithing among most people is forgotten. As one has said "The world is gone mad after greed and foolishness. Of the thirty eight parables spoken by Jesus, sixteen of them in some way refers to money.

A statistics shows while this nation spent in one year for the sacred cause of Christian missions, \$5,000,000, that same year this nation spent \$20,000,000, for chewing gum, \$25,000,000, for kid gloves, \$25,000,000, for plumes-feather to put on hats and bonnets, 50,000,000, for pleasure, \$500,000,000 for snuff and tobacco, and more than \$1,000,000,000 for drink. This nation according to the Literary Digest spends \$125,000,000 annually for witch crafty—good luck hands, fortune telling, etc.

With so little spent for Christian Missions; compared with other expenditures, the Church is netting a tremendous return, in education, civilization, and Christianizing. To say nothing about soul saving. Upon which finite creatures are unable to calculate. The living influence of the Church is felt throughout the world. While the masses contribute so little to the Church, and its cause, no one wishes to live in a country where the Church has no place.

## II The State of the Church Morally.

Like the mustard seed, the moral influence of the Church is deepening, and widening. The entire lump is slowly, but surely being leavened.

This moral uplift is seen in the wake of society every where. In our communities, and in our legislative halls. It is a mistake to feed as some believe, that the agencies of sin-crime, immorality, prejudice,



mob violence, and war should immediately cease their activities. No. There is the battle battling proud for the Church. And this battle will continue til the final consummation. The Church must win. The Church will win. Not by gunshot, and shell. But by the operation of the Holy Ghost in the heart of men. Storms, pestilences, wars, nor yet death can change the heart of men. Yea nothing but the Holy Ghost.

### III. State of the Church Spiritually.

There is no need of us trying to fool ourselves when it comes to the spiritual state of the Church. We believe with all our being that the kingdom of God will come, but we must help in the coming. The Church must swing away from every appearance of compromise with evil. We must save our young people at our door, before we talk about saving the world. One has rightfully said that "The Church must set its house in order and formulate a program that will capture the world for God." Ministers must live the Christ life, and preach a burning gospel. Christians must be Christians every day, at home and in the streets, as well as at the Church on Sunday. Let the Church pray for a baptism of fire. When we take a prayerful survey of the Church: we lament with the poet when he said, "Where is the blessedness I knew, wehn first I saw the Lord, Where is the soul refresh and view of Jesus and His word." Now are the class meetings attended? What about our weekly prayer meetings?

Let us collect money for the Church. Collect more miney. But yet the Church put on a campaign fir siul winning.

The Church is in need of Preachers. Preachers whi will nit condone evil. Preachers whose objective is not to show how scholarly they are, but Preachers who will live on the mountain with God until their hearts are on fire, and their faces aglore with the divine presence of the Lord, and then come down in the world and preach Jesus.

REV. W. R. AKERY.

### RESOLUTION

Madison, Fla. December 6, 1936

Whereas, The General Conference convening in the city of New York, May 1936, in its wise judgment assigned to the Eleventh Episcopal District our own son in the person of Rt. Rev. Robert A. Grant, D. D. to overseer and carry on the work of our church in Florida and his loveable wife, and great christian worker, Mrs. M. E. Grant, who, is constant at his side sharing with him in his sorrows and rejoicing with him in his triumph we have received them with open arms and glad hearts. On behalf of the ministry and laity, we pledge our loyalty in helping to carry forward their program.

And Wheras, Bishop Grant has worked so earnestly to build up ever interest in the A. M. E. Church in Florida.



Resolve that the Florida Conference the mother of African Methodist in Florida as a token of appreciation for her noble son and daughter . Make a donation at the setting of the next session of our Conference of two hundred and five dollars, (\$205.00) as follows: Tallahassee district \$55.00; The Monticello, Madison and the Perry districts \$35.00 dollars each.

A. L. BENNETT,  
 I. S. ROUNDTREE,  
 C. H. BURGESS  
 P. E. DAUGHTERY  
 E. NATHAN ?  
 A. I. G. RICHARDSON  
 H. E. DANIELS  
 S. D. COOPER  
 W. R. AKERY  
 W. M. MITCHELL  
 T. B. CARR  
 C. T. SIKES  
 J. F. LIVINGSTON

#### RESOLUTION

Whereas, we the Members of the Florida Conference feel that under Bishop Grant, through God victory is ours. Therefore, be it

Resolved that the Florida Conference go on record as pledging anew our loyalty and unstinted support to the program of Bishop Grant, for the success of the work of the Eleyenth Episcopal District.

W. R. AKERY, Chairman and all of the Pastors of the Florida Conference,

A. L. BENNETT  
 A. I. G. RICHARDSON  
 H. E. DANIELS  
 P. E. DAUGHTRY  
 I. S. ROUNDTREE.

#### RESOLUTION

Madison, Florida, December 1936.

To the Bishop and Members of this the Seventieth Session of the Florida Conference, Greetings:

Let us pause for a moment to thank God our Heavenly Father who has along with other branches of the Christian Church, guided this our zion. For 150 years our banners has been floating to the breeze, and our borders are so extended that the "Sun" never sets on our holdings. For seventy years in Florida we have under God preached the Fatherhood of God: universal redemption through Jesus Christ, and the brotherhood of man. Led on by our Fathers in God—our chief pastors whom



were assigned to superintend this work in the Eleveth Episcopal District.

Whereas, taking a retrospect we see that all of our former prelates except the Rt. Rev. J. S. Flipper, D. D., L. L. D. have passed to the glory land, and to succeed Bishop Flipper, the Lord through the Thirty-seventh Session of the Feneral Conference held in N. Y. City, May 1936, saw fit to assign to Slorida a son of Florida soil, as Bishop of the Eleventh Episcopal District, the Rt. Rev. R. A. Grant, D. D., L. L. D. whose coming to Florida found our doors, hands and heart open to receive him, and Mrs. Grant and,

Whereas, his coming is hailed with delight and his presence has to us been a source of inspiration, both to the Laity and Clergy and the Church has already taken on new life, and Edward Waters College is blooming as a rose kissed by the sparkling dews of heaven, beneath the penciling rays of a brilliant Eastern Sun, and

J. F. LIVINGSTON,  
S. P. ROBINSON and others.

#### RESOLUTION

Madison, Florida, December 4, 1936

To the Bihop , Members and Friends of the Florida Conference now assembled:

Whereas: The African Methodist Church is one of the greatest organizations owned and absolutely controled by Negroes, in the world, and today is serving as one of the most influential agencies in religious, social and educational uplift.

Whereas: The General Conference in its last Quadrennial session in New York City deemed it wise and necessary to assign to the Eleventh Episcopal District the Rt. Rev. Robert A. Grant, D. D. L. L. D.,

Whereas: Bishop Grant has so wisely and courageously taken hold of the work in Florida, giving to every phase of it additional life and meaning.

WHEREAS: It has been proven conclusively and is now being exemplified by the Bishop himself that he is a sane and fearless leader.

Whereas: Mrs. Maud Grant, the queenly wife of the Bishop, is so gloriously leading on the missionary women of the state.

Whereas: We are very anxious that our fair state keep pace with all the other states repressing the church and realizing this can best nectional honors and standing one hundred per cent with the administration.

Whereas: The type of persons desired are fully recognized in the Rev. George E. Curry and the Rev. C. A. Gibbs.

Whereas: The Rev. Gibbs aspires for the office of Bishop and possesses all of the qualifications as prescribed by the apostle Paul in his



first letter to Timothy, 3:1-7 relative to one who desires the office of Bishop.

Whereas: The Rev. Curry has proven his ability as a business man and a great executive, who twice has received the largest number of votes of any man, aspiring for the managership of the A. M. E. Book Concern with the exception of the present incumbent.

Be It Resolved: That this Conference, now in session go on record by vote endorsing and pledging while-hearted support to the administration of Bishop R. A. Grant, and his wife.

Be It Further Resolved: That this Conference also go on record endorsing Rev. G. E. Curry as candidate for the Managership of the A. M. E. Book Concern and Rev. C. A. Gibbs as candidate for the Bishopric, to be elected in 1940 and pledging them unstinted support in their aspirations.

Respectfully Submitted  
Committee,



M I N U T E S  
of the  
W O M A N ' S C O N V E N T I O N  
FIRST DAY—MORNING SESSION

Midway, Florida, July 30, 1936

The Tenth Session of the W. H. and Foreign Missionary Convention convened in Hagard Chapel A. M. E. Church, Thursday 11:00 A. M., July 30, 1936, Mrs. Ella W. Daniels presiding. Rev. J. F. Livingston conducted the devotion. He lined hymn No. 26, "Once More We Come Before Our God," Prayer by Mrs. Carrie Roberts. Selection "I Know It Was His Blood For Me." Second hymn No. 543. Brethren we have met to worship.

Rev. H. E. Daniels introduced the speaker for the hour, Rev. I. Hackley, pastor St. James Station, Quincy. He selected for his text Samuel 16:7, but God said, this is not the man, you are judging at the outer appearance but, I am looking at the heart. Subject, "Why God Sent Samuel to Bethlehem?" He preached a noble sermon. At the close Mrs. Bessie Livingston lead in singing, "Let Jesus Fix It For You."

Rev. B. W. Roberts, Rev. J. F. Livingston administered the Lord's Spper. Rev. Livingston turned the meeting over to the Conferneece president Mrs. Ella W. Daniels. She made some brief remarks that was fully thoughts and inspiration. Then she proceeded to go into irganization. Motion that the bar of the Convention be the fourth seat across the chancel, including the amen corners. Carried.

Mrs. E. Nickles, Mrs. Mabel Simmons were elected as ushers. Mrs. Annie Shaw was elected reporter to the Church papers. Mrs. Deana Lawrence was elected reporter to the Florida Times-Uniin, and the Tampa Bulletin.

C O M M I T T E E S

CONTINGENT: Mrs. Annie Johnson, Miss Emma McGill, Mrs. Deana Lawrence, Mrs. Julia Morgain.

FINANCE COMMITTEE: Mrs. Althea Ayers, Mrs. Alice Bennett, Mrs. Sallie Mitchell, Miss Sarah Roundtree, Mrs. Annie Daugherty, Mrs. Cora Alexander.

ON JUNIOR: Mrs. Virgunia Sanders, Mrs. Dinella Shaw, Mrs. E. L. Hackley, Miss Richie B. Anderson, Mrs. K. W. Mount, Mrs. Narcissie Little.

ON TURNER MEMORIAL: Mrs. Carrie Roberts, Mrs. Rachiel Deemus, Mrs. Gurtrue Brown, Mrs. Seneata Gillard, Mrs. Eliza B. Jones, Mrs. Emma L. Stephen, Mrs. Viola Hackley.

CN QUADRENNIAL: Mrs. Bessie Livingston, Mrs. O. B. Dawsey, Mrs. Adie Mitchel.



Notices were read by the Secretary. Roll call and collecting dues amount \$9.90c. The president introduced Rev. I. S. Roundtree, P. E. of the Monticello District. Rev. A. L. Bennett, P. E. of the Quincy District. Rev. I. Hackley, pastor St. James A. M. E. Church, Quincy, Rev. B. W. Roberts, pastor St. Hebron A. M. E. Church, Rev. S. Nealy, pastor, Rev. J. F. Livingston, pastor, Quincy Station, Rev. W. R. Akery, pastor Bethel Station, Tallahassee, Rev. H. E. Daniels, pastor Memorial A. M. E. Church, Cerry. President closing remarks. Public collection 89c. Announcements, Doxology, Benediction by Rev. I. Hackley.

#### FIRST DAY—AFTERNOON SESSION

The Convention reconvened at 3:30 p. m. Mrs. Ella W. Daniels presiding. Devotion was conducted by the delegates from the Tallahassee District. Hymn No. 192, "Oh for a closer walk with God." Prayer by Mrs. Julia Morgam. Selection, "Tell Me, What Will You Have Me To Do?". Scripture lesson, Psalms 19th read by Miss Thelma Gilles. After devotion the meeting was turned over to the president. She called for the reports from the districts and local presidents. Received from membership fee \$2.95c. Received from the

#### QUINCY DISTRICT

Mrs. Alice Bennett, District President.

Arnett Chapel Station \$1.00, Contingent \$1.00; Junior .25c, St. John Station \$1.00; Contingent 55c, Junior 25c, Mt. Zion and Palace \$1.00; Contingent 50c, St. Hebron Circuit, \$1.00; Contingent 50c: Union Mission \$1.00. Contingent 40c, Junior 25c. Hopewell Mission \$1.00. Contingent 70c, Mt. Pleasant Mission 75c, Douglass and Hardaway 50c, Grand total \$12.15c.

#### TALLAHASSEE DISTRICT

Mrs. M. D. Avery District President.

Betel Station \$1.00, Contingent 50c, Mt. Moria Mission \$1.00. Midway Circuit \$1.00, Contingent \$1.00, Junior 30c, Anderson Chapel 25c, Sinia Circuit \$1.00, Contingent \$1.00, Junior 25c. Total \$7.30c.

#### MONTICELLO DISTRICT

Mrs. Sarah Roundtree, District President.

Bethel Station \$1.00, Contingent 50c, Junior 25c, Mt. Pleasant Station \$1.00, St. Phillip Mission 50c, Contingent 50c, Junior 25. Total \$4.00.

#### MADISON DISTRICT

Mrs. .... District President.

Madison Station \$1.00, Contingent \$1.30, Junior 30c. Jeslam Station \$1.00, Contingent 50c, Junior 25c. Total \$4.35.

#### PERRY DISTRICT

Mrs. Annie Daugherty, District President.

Steward Memorial \$1.00, Contingent \$2.00, Junior \$1.00. Total \$4.00.



From Roll Call \$12.15, Contingent \$10.90. From charges \$17.00. Junior \$3.35. Public \$2.89. Total \$46.29.

Subjects for discussion Unity. Opened by Mrs. Annie Shaw. Subject: Hope and Reward, opened by Mrs. Althea Ayers, discussed by Convention. President made closing remarks. Announcements, Missionary. Benediction.

#### FIRST DAY—EVENING SESSION

The Convention reconvened at 8:00 o'clock p. m. Mrs. Ella W. Daniels presiding. Song service. After song service Mrs. Mabel Pinkney, Mrs. Ceneater Gillien, Mrs. Lottie Dinkney conducted the devotional service. After the devotional Rev. H. E. Daniels lead in singing, "I know it was His blood for me," He lined first hymn No. 293 "Hark how the watchman cry." Scripture lesson the 23 Psalm in concert. Selection, "I am on the battle field for my Lord." Rev. H. E. Daniels presented the speaker for the hour, Rev. J. C. Bradley, pastor Hopewell A. M. E. Church. He selected for his text, St. John the 1-32 verse. And I if I be lifted up from the earth, I'll draw all men unto me. He delivered the message with power. Rev. H. E. Daniels lead in singing a spiritual then turned the meeting over to the president Mrs. E. W. Daniels. She made some remarks then appointed Mrs. Althea Ayers, Mrs. Annie Daugherty, Mr. Rollie Howard to lift the offering. Amount \$2.00. T

The Conference president presented Mrs. Cora Alexander as Mistress of ceremonies, she came forward and rendered a local program. It consisted of Welcome addresses, readings, solos, and Quartettes. Mrs. Carrie Roberts presented Mr. Annie Daugherty who made the response. Eighty cents (80c) was presented by Mrs. Cora Alexander to the Quartetts from Hagard Chapel A. M. E. Church, Midway and Havana. President closing remarks. Announcement, Benediction by Rev. B. W. Roberts.

#### FRIDAY MORNING—SECOND DAY

Convention met at 12:00 o'clock a. m. on account of rain. Mrs. Ella W. Daniels presiding. Miss Sarah Roundtree, Mrs. E. L. Hackley, Mrs. Deana Lawrence conducted the devotions. After devotion a few remarks by the Conference president. She called for the Minutes of the previous days session, they were read and approved. Reports from the local Societies was called for.

#### QUINCY DISTRICT

Mrs. Idella Shaw reported for St. John Station, Mrs. Carrie Roberts reported for St. Hebron Circuit.

#### TALLAHASSEE DISTRICT

Mrs. Cora Alexander reported for Midway Circuit. Rev. T. B. Carr reported for St. Phillip.



**PERRY DISTRICT**

Mrs. O. B. Dawsey reported for Steward Chappel Perry.

**DISTRICT PRESIDENTS' REPORT**

Miss Sarah Roundtree, Dist. Pres. of the Monticello Dist., made report. Mrs. Annie Daugherty, District President of the Perry District made report. Mrs. Alice Bennett District president of the Quincy District made report. Mrs. Althea Ayers made report for the Madison District. All reports good with a little increase.

Subject for discussion—"Every Christian a Missionary". Opened by Mrs. O. B. Dorsey and Miss Sarah Riundtree. Subject—Missionary by Mrs. Senetta Gillian. Selection. "Tell me what will you have me to do?" and "Lead me on dear Lord."

Quartett of Juvenile girls for Union Chappel. Closing remarks by the Conference president. Selection.

The Convention went into the elction of officers for the ensuing year.

Mrs. Ella W. Daniels, Conference President.  
 Mrs. Cora Alexander, First Vice President.  
 Mrs. Carrie Roberts, Second Vice President.  
 Mrs. Althea Ayers, Conference Treasure.  
 Mrs. L. M. Hansberry Conference Secretary.  
 Mrs. Mamie Leonard, Corresponding Secretary.  
 Mrs. Annie Daugherty, Junior Superintendent.  
 Mrs. Sallie Mitchell, Assistant Superintendent.

**EXECUTIVE COMMITTEE**

Mrs. Bessie Livingston, Mrs. M. D. Akery, Mrs. Deanna Lawrence, Mrs. Stevie Williams, Mrs. Sallie Mitchell.

Chairman Turner Memorial, Mrs. Rachel Deemus. Chairman of Contingent, Mrs. Annie Johnson. President closing remarks. Announcements. Missionary, Benediction.

Money raised in this meeting .....\$ 47.04

**DISBURSEMENTS**

Disbursement to the Department for Contingent .....\$ 7.00  
 Young People's Department .....\$ 3.00  
 To the State Meeting .....\$ 5.00  
 Printing of Programs .....\$ 4.50  
 Miscellaneous Expenses .....\$ 23.75

Total Disbursed .....\$ 43.25

Paid to State for Education .....\$ 25.00

Grand Total .....\$ 68 25

(MRS.) ELLA W. DANIELS, President.

(MRS.) L. M. HANSBERRY, Secretary.



Statistical Table  
1936



## TALLAHASSEE DISTRICT—REV. A. I. G. RICHARDSON, P. E.

CHARGES	PASTORS	Members found in Charge								
		Persons Converted	Accessions	Members in Charge	Probationers in Charge	Local Preachers	Missionary Societies	Temperance Societies	A. C. E. Leagues	Church Auxiliaries
Bethel Station .....	Rev. W. R. Akery ..	445	9	28	465	2	1	1	1	13
Chaires Station .....	Rev. G. W. Goins ..	156	1	8	167	17	1	1	1	5
Concord Circuit .....	Rev. E. Nathan .....	90	6	6	112	4	1	1	1	2
Zion Hill Circuit .....	Rev. C. J. Reed .....	120	4	4	112	3	1	1	1	2
Mid Way Circuit .....	Rev. B. Alexander ..	150	3	3	123	2	2	2	2	2
Sinai Circuit .....	Rev. L. B. Carr .....	75	4	6	100	2	2	2	2	2
Rich Bay Circuit .....	Rev. J. W. Branton ..	65	2	2	50					
Lake Jackson Mission ..	Rev. A. Parish .....									
Mt. Moriah Mission .....	Rev. W. M. Mitchell ..	90	4		94		2		1	1
Pine Hill Mission .....	Rev. E. Hill .....	20	2	2	15		1			
Anderson Chapel M. .....	Rev. G. B. R. Grant ..									
New England Miss. ....	Rev. C. H. Hawkins ..						1		1	1
St. Philip Miss. ....	Rev. H. Diggs .....	125	1	6	86		1		1	1
New Zion Miss. ....	Rev. R. H. Johnson ..	28			28				1	
Flinner Chappelle M. ....	Rev. K. S. Dupont .....	24	2	3	29	2			1	

## MONTICELLO DISTRICT—REV. I. S. ROUNDTREE, P. E.

Monticello Station .....	Rev. D. H. Hackley ..	130	6	12	124		1	1	1	4
New Bethel Station .....	Rev. G. W. Jones .....	178	5	5	187		1			
Mt. Pleasant Sta. ....	Rev. S. P. Hooks .....	127			127	1	1		1	
Philadelphia Sta. ....	Rev. Willie Jones .....	50	7	7	57		1	1	1	18
Mt. Olive Sta. ....	Rev. S. G. Gibbs .....	108	6	4	188	1				3
Lloyd Circuit .....	Rev. C. H. Dudley .....	110	1	6	90	1	2		1	2
Aucilla Circuit .....	Rev. G. J. White .....	102	3	6	111	3	2		2	2
Union Branch Cir. ....	Rev. W. C. Bishop .....	116	2		118	3	1		1	9
Centenary Circuit .....	Rev. M. Peck .....	54	1	5	60	1	1			
Mt. Zion Miss. ....	Rev. S. M. Scott .....	55		43	25	4			1	
St. Phillip Miss. ....	Rev. S. James .....	60	2	1	63	1	1		1	1
Anitoch Miss. ....	Rev. J. Jackson .....	28	1	2	30	1				
St. Thomas Miss. ....	Rev. E. Taylor .....	13	3	5	21		1	1		3
Macedonia Miss. ....	Rev. Penj. F. Hooks ..	15			15					
Coleman Miss. ....	Rev. A. W. Sandes .....	10		1	10					1

## PERRY DISTRICT—REV. P. E. DAUGHTERY, P. E.

St Paul Station .....	Rev. H. E. Daniels .....	107	1	23	130		1		1	1
Fountain Chapel Sta. ....	Rev. G. W. Hills .....	127	6	10	145	1	2	1	1	1
Union Hill Sta. ....	Rev. S. Sampson .....	140	2	1	142		1		1	5
Bolden Cir. ....	Rev. H. D. Davis .....	140		3	140	3	2		2	
Waukeenah Cir. ....	Rev. G. Dean .....	48	4	4	35		2			
Boyd Miss. ....	Rev. H. Underwood ..	15		5	15	4	1			1
Spring Hill Miss. ....	Rev. G. W. Williams ..	26		2	26	2	2			
Capos Miss. ....	Rev. S. Stewart .....	33	1	3	25		1		1	
Carbur Miss. ....	Rev. Jasper Verrett ..	3			3					
Drifton Miss. ....	Rev. K. S. Perry .....	4	2	2	9		1			2
Fanlue Miss. ....	Rev. C. Williams .....	3			3					
Crawfordville Miss. ....	Rev. B. L. Mitchell ..	30			30					
Foley Miss. ....	Rev. H. E. Daniels .....	25		5	30		1	1	1	2



A. M. E. CHURCH

TALLAHASSEE DISTRICT—REV. A. I. G. RICHARDSON, P. E.

Other Societies	No. of Churches	Seating Capacity of Churches	No. of Parsonages	No. of School Houses owned by Charge	Adults Baptized	Infants Baptized	No. of Deaths	Dollar Money Fund	Theological Seminary Fund	Conference Contingent	Allen Day	Founders' Day—E. W. C.	Easter Day Fund	P. H. & F. M. Fund	W. H. & F. M. Fund
	1	600	1		9	7	7	\$ 230.00	\$ 5.00	\$15.00	\$ 2.00	\$ 1.00	\$ 5.00	\$ 1.00	\$12.00
	1	150	1	1	1	4	4	45.00	1.00	6.00	1.00	1.00	2.00	1.00	5.00
	2	800	1		3	10	2	36.00	1.00	6.00	1.00	1.00	2.00	1.00	5.00
1	3	500	1	1	9	1	9	37.00	1.00	5.00	1.00	1.00	1.00	3.00	1.00
	3	1000			3	10	2	40.00	1.00	5.00	1.00	1.00	2.00	5.00	1.00
4	2	700			4	8	1	40.00	1.00	3.00	1.00	1.00	2.00	1.00	3.00
	2	500	1	1	2			14.00	2.50	1.00	1.00		1.00		1.00
	2				4	3	3	14.00	1.00	2.50	1.00		1.00		2.00
2	2	6			2			30.00	1.00	3.00	1.00	1.00	2.00	1.00	2.50
	1				2			5.00		2.00					1.00
								5.00	1.00	2.00					
								2.00	5.00	2.50	1.00				
	1	300	1		1	5	2	25.00	1.00	3.00	1.00	1.00	1.00	1.00	2.00
	1							6.00		2.50					1.00
1	1	225			2	10		10.00	1.00	2.50	1.00	1.00	1.00		1.00

MONTICELLO DISTRICT—REV. I. S. ROUNDTREE, P. E.

1	1	500	1		6		4	\$ 70.00	\$ 1.00	\$ 6.20	\$ 2.00	\$ 1.00	\$ 4.00		\$ 5.00
1	1	500			5	3	6	30.00	1.00	3.00	1.00		6.00	1.00	3.00
	1	400	1	1			3	40.00	1.00	2.50	1.00	1.00	1.00		3.00
	1	150			6		2	22.00		.50	2.50	1.00	.50	2.00	3.00
	1	150	1		2	3	1	32.00	1.00	2.50	1.00	1.00	1.96	1.00	1.00
	2	150	1		1	5	4	50.00	1.00	2.50	1.00	1.00	2.00	1.00	3.00
2	2	400	2	2	3	4		30.00	.50	2.50	1.00	.50	2.00		3.00
10	2	500			2	2		32.00	1.00	2.50	1.00		1.00	1.00	3.00
	2	1		1	1			12.00	1.00	2.50	1.00		1.00		3.00
	1		10			5	1	16.00		2.50			2.00	2.00	
1	1	200	1		2	4		17.00			1.00		1.50		
	1			1		3		12.00	.50	2.50	1.00	.50	1.00		21.00
	1	75			3			6.00		2.50	1.00		1.00		2.00
	1	50						4.00		2.50					
	1	50					1	6.00		2.50	1.00		1.00		2.00

PERRY DISTRICT—REV. P. E. DAUGHTERY, P. E.

	1	200			1	6	1	\$ 51.00	\$ 2.00	\$ 5.00	\$ 1.00	\$ 1.00	\$ 5.00	\$ 1.00	\$ 5.00
	1	300	1		6	1	3	95.00	2.00	6.00	1.00	1.00	3.00	1.00	8.00
	1	250	1		1		1	25.00	2.00	2.50			2.50		3.00
	2	900	1				3	56.00	1.00	5.00	1.00	1.00	2.00	1.00	4.00
	1	300			2	4	4	10.00	1.00	2.50	1.00		1.00		2.00
	1	500		1				4.00		2.50	1.00		1.00		2.00
	2	50		2		2		8.00	1.00	2.50	1.00		1.00		3.00
	2	50						5.00	1.00	2.50	1.00		1.00		2.00
	1	200			1	1		3.00		2.50					1.00
								3.00		2.50					1.00
	1	40			1			5.00	1.00	2.50	1.00		1.00		1.00
	1			1	1			3.00		2.50				1.00	1.00
1	1						1	13.00	1.00	2.50	1.00		1.00		3.00
	1	150					1	15.00	1.00	2.50	1.00		1.00		3.00



## TALLAHASSEE DISTRICT—REV. A. I. G. RICHARDSON, P. E.

CHARGES	Educational Fund	Educational Fund	Minute Money	E. W. C. Building Fund	Children's Day Fund	Students' Fund	E. W. C. Improvement Fund	Endowment Day Fund	Pension Fund
	May Day	Personal							
Bethel Station .....	\$ 37.00	\$ 1.00	\$ 4.50	\$ 1.00	\$ 5.00	\$ 1.20	\$ 1.00	\$ 100.00	\$ 5.00
Chaires Station .....	18.00		3.00	1.00	2.00	1.20	1.00	20.00	1.00
Concord Circuit .....	15.00	1.00	3.00	1.00	2.00	1.20	1.00	20.00	1.00
Zion Hill Circuit .....	5.00		3.00	2.00	2.00	1.20	1.00	10.00	1.00
Mid Way Circuit .....	35.00	1.00	5.00	1.00	4.00	1.20	1.00	40.00	1.00
Sinai Circuit .....	25.00		3.00	1.00	1.00	1.20	1.00	40.00	1.00
Rich Bay Circuit .....	4.00		1.00	1.00	1.00	1.00		5.00	1.00
Lake Jackson Mission .....	4.00		1.00	1.00	1.00	1.00		5.00	1.00
Mt. Moriah Mission .....	25.00		1.50	1.00	1.00	1.20	1.00	25.00	1.00
Pine Hill Mission .....	1.50		1.00					1.00	
Anderson Chapel M. .....			1.00					1.00	
New England Miss. .....								1.50	
St. Philip Miss. .....	12.00		2.00	1.00	1.00	1.00	1.00	3.50	1.00
New Zion Miss. .....			1.00			1.00			
Flinner Chappelle M. .....	8.00	1.00	1.50	1.00		2.50	1.00	12.00	

## MONTICELLO DISTRICT—REV. I. S. ROUNDTREE, P. E.

Monticello Station .....	\$ 30.00	\$ .00	\$ 3.00	\$ 1.00	\$ 2.00	\$ 1.20	\$ .00	\$ 33.00	\$ 1.00
New Bethel Station .....		1.00	1.80	1.00	1.20			5.00	1.00
Mt. Pleasant Sta. ....	5.00	1.00	2.10		1.00	1.20		7.00	
Philadelphia Sta. ....	10.00	1.00	1.80	.50	2.00	1.20		14.00	1.00
Mt. Olive Sta. ....	5.00	1.00	1.50	1.00	1.00	1.20		1.00	1.00
Lloyd Circuit .....	21.00	1.00	2.70		1.00	1.20		16.50	1.00
Aucilla Circuit .....	5.00	1.00	2.25	.50	1.00	1.20		11.00	1.00
Union Branch Cir. ....	15.00	1.00	2.25		1.00	1.00		5.15	1.20
Centenary Circuit .....	5.00	1.00	1.50		1.00	1.00		12.00	1.00
Mt. Zion Miss. ....			1.90		2.00	3.00		1.00	
St. Phillip Miss. ....	7.00				2.00				
Anitoch Miss. ....	5.00	.50	.90	.50	1.00	1.20		5.00	1.00
St. Thomas Miss. ....	4.00		1.05		1.05				
Macedonia Miss. ....			.90						
Coleman Miss. ....	2.50	.75	.75		1.00	1.20		2.00	

## PERRY DISTRICT—REV. P. E. DAUGHTERY, P. E.

St Paul Station .....	\$ 16.00	\$ 1.00	\$ 2.00	\$ 1.00	\$ 5.00	\$ 1.20	\$ 1.00	\$ 60.00	\$ 1.00
Fountain Chapel Sta .....	43.00	1.00	2.00	1.00	4.00	1.20	1.00	40.00	1.00
Union Hill Sta. ....			1.50			1.20		15.00	1.00
Bolden Cir. ....	2.00	1.00	2.00	1.00	1.00	1.20	1.00	25.00	1.00
Waukeenah Cir. ....	5.00		.75		1.00	1.20		40.00	1.00
Boyd Miss. ....	10.00		.50		1.00			2.00	
Spring Hill Miss. ....	2.00		.50		1.00	1.20		6.00	.50
Capps Miss. ....	2.00		.50		1.00	1.20		2.00	.50
Carbur Miss. ....	3.00	1.00			1.00			3.00	
Drifton Miss. ....	2.00		.50		1.00	1.20		3.00	
Fanlue Miss. ....	2.00		.50		1.00			2.00	
Crawfordville Miss. ....	5.00		1.00		1.00	1.20		5.00	.50
Foley Miss. ....	10.00					1.20		25.00	







## TALLAHASSEE DISTRICT—REV. A. I. G. RICHARDSON, P. E.

CHARGES	A. M. E. Review	Southern Christian Recorder	Voice of Missions	Western Christian Recorder	Star	Woman's Missionary Recorder	Pastor's Support	P. E. Support	Charitable Purposes	Purchasing Building or Repairing
Bethel Station	\$1.00						\$1218.20	\$197.60	\$32.37	\$326.18
Chaires Station	1.00						248.35	91.60	13.00	36.13
Concord Circuit	1.00						220.18	93.00	10.00	40.00
Zion Hill Circuit	1.00						240.50	80.00	15.00	60.00
Mid Way Circuit							341.60	87.75	4.14	
Sinai Circuit	1.00						261.71	53.80	20.00	300.00
Rich Bay Circuit	1.00						103.60	26.00	5.00	10.00
Lake Jackson Mission	1.00									
Mt. Moriah Mission							295.30	60.75	8.50	754.45
Pine Hill Mission							24.00	6.00	1.00	25.00
Anderson Chapel M.		1.50	1.00							
New England Miss.							40.00			
St. Phillip Miss.	1.00						150.00	48.00	4.00	
New Zion Miss.	1.00						6.95	2.00		
Flipper Chappelle M.							108.95	24.59	5.00	199.00

## MONTICELLO DISTRICT—REV. I. S. ROUNDTREE, P. E.

Monticello Station							\$310.00	\$76.25		
New Bethel Station							346.50	59.50		178.35
Mt. Pleasant Sta.	1.00						144.76	36.30	4.00	19.00
Philadelphia Sta.							150.10	40.00	8.00	10.00
Mt. Olive Sta.			1.00				120.00	22.50	5.00	8.00
Lloyd Circuit	1.00	1.00					226.18	66.35	7.00	8.40
Aucilla Circuit							187.75	65.25	7.55	30.00
Union Branch Cir.							148.81	47.41		
Centenary Circuit							180.00	25.25		
Mt. Zion Miss.							55.00	25.00	2.00	
St. Phillip Miss.							42.50	29.10		4.13
Anitoch Miss.							43.40	37.10	2.75	1.50
St. Thomas Miss.							30.00	7.07	5.00	6.00
Macedonia Miss.							5.20	2.50		
Coleman Miss.							17.00	9.67		

## PERRY DISTRICT—REV. P. E. DAUGHTERY, P. E.

St Paul Station					1.00		\$425.25	\$104.00	\$18.50	\$580.50
Fountain Chapel Sta.	1.00						490.00	140.00	25.00	150.00
Union Hill Sta.							43.35	40.00	6.00	
Bolden Cir.			1.00				232.00	160.00	10.00	25.00
Waukeenah Cir.							12.00	18.00	4.00	25.00
Boyd Miss.							95.00	20.00	2.00	40.00
Spring Hill Miss.			1.00				89.00	30.00	5.00	
Capps Miss.							41.55	20.00	.50	2.81
Carbur Miss.							49.00			
Drifton Miss.					1.00		12.00	5.00	1.75	10.00
Fanlue Miss.							55.00	5.25		7.00
Crawfordville Miss.			1.00				100.00	45.00		
Foley Miss.							189.00	52.00	2.00	



A. M. E. CHURCH

TALLAHASSEE DISTRICT—REV. A. I. G. RICHARDSON, P. E.

Current Expenses	S. S. Own Use	For Mortgage Debt.	From Church Extension Loan or Donation	Total amount collected for Local Purposes	Value of Church and S. S. Property	Indebtedness of the charge	Amount due on Interest	Amount of Interest Paid Church Extension	Bal. in Steward's Treasury
\$389.76	\$.....	\$425.00	\$.....	\$ 2504.11	\$4000.00	\$ 8000.00	\$.....	\$.....	\$.....
6.00	15.01			410.09	2000.00	30.00			
24.00		75.00		477.18					
10.00	7.00			377.20	1585.00	25.00			.60
	10.00			1260.40	3000.00				
30.00	25.00			839.21	1000.00				
3.00	4.00			166.60					
8.25	10.50	113.75	124.75	1377.50					
6.00	6.00			434.00	1000.00				
				8.95					
34.00	9.00			300.54	800.00	11.01			6.00

MONTICELLO DISTRICT—REV. I. S. ROUNDTREE, P. E.

		\$140.15	\$.....	\$ 602.65	\$.....	\$.....	\$.....	\$.....	\$.....
.50	.15					876.60			
4.00	5.00			286.36	20.00	9.00			
5.00	6.00			219.00	350.00				
7.00	5.00				80.00				5.00
3.55	14.30	46.66		372.44		415.00			
14.00	12.00			354.68	15.00	20.00			
				345.75					
				215.20					
5.00				125.00	35.00				2.00
					100.00	10.50			
				83.75	300.00				
10.00	2.00				250.00	41.53			
					200.00				
1.00	3.00			56.12					

PERRY DISTRICT—REV. P. E. DAUGHTERY, P. E.

\$ 85.00	\$ 30.00	\$ 70.00	\$.....	\$.....	\$.....	\$ 1340.00	\$.....	\$.....	\$.....
50.00	20.00			1158.20					
10.00	9.00			255.56					
5.00	15.00				15.00				2.00
12.00	4.00			2.50	65.50				
3.00	10.00			33.00	40.00	12.00			
8.10				200.25					
.76	2.00			83.36	1.00				
1.00	2.00			51.00	50.00	20.00			
				67.25	1.50				
				235.10					
	15.00					3.50			



## TALLAHASSEE DISTRICT—REV. A. I. G. RICHARDSON, P. E.

CHARGES	Bal. in Trustee's Treasury	No. of S. Ss.	No. of Officers	No. of Teachers	No. of Pupils	No. of Conversions during the year	No. of Circulating Books in Library	No. of Bibles	No. of Hymn Books	No. of Lesson Helps taken quarterly	Literature used
Bethel Station .....	\$ 4.65	1	12	16	205		175			10	A. M. E.
Chaires Station .....	5.00	1	9	5	50	1	24	1	1	35	A. M. E.
Concord Circuit .....		2	18	6	40	6	20	6	1		A. M. E.
Zion Hill Circuit .....	30.60	1	7	9	30	9	30	2	2	16	A. M. E.
Mid Way Circuit .....	2.00	3	18	7	80		40	6	3	1	A. M. E.
Sinai Circuit .....		2	6	6	65	4	60	2	2		A. M. E.
Rich Bay Circuit .....											A. M. E.
Lake Jackson Mission .....											A. M. E.
Mt. Moriah Mission .....			2	9	9	5	9	8	12		A. M. E.
Pine Hill Mission .....											A. M. E.
Anderson Chapel M. ....											A. M. E.
New England Miss. ....		3	1								A. M. E.
St. Philip Miss. ....		1	9	3	35		35			40	A. M. E.
New Zion Miss. ....											A. M. E.
Flipper Chappelle M. ....		1	7	4	19	2	22	2	2		A. M. E.

## MONTICELLO DISTRICT—REV. I. S. ROUNDTREE, P. E.

Monticello Station .....	\$18.02	1	7	4	40	6		7	1		A. M. E.
New Bethel Station .....		1	9	4	4	5	22	5	6		A. M. E.
Mt. Pleasant Sta. ....		1	9	4	40		5	2	1	5	A. M. E.
Philadelphia Sta. ....		1	9	5	35			5	2		A. M. E.
Mt. Olive Sta. ....	3.00	1	4	2	18	6	20	1	1	8	A. M. E.
Lloyd Circuit .....	33.40	2	14	8	58			8	2		A. M. E.
Aucilla Circuit .....		2	10	4	42	3	36	8			A. M. E.
Union Branch Cir. ....		2	2	8	40	2	12	2	2	20	A. M. E.
Centenary Circuit .....											A. M. E.
Mt. Zion Miss. ....	.34	1	9	9							A. M. E.
St. Phillip Miss. ....	4.13	1	5	4	25		9	2	1		A. M. E.
Anitoch Miss. ....	2.40	1	8	5	39		7	3	2		A. M. E.
St. Thomas Miss. ....		1	3	2	12	3	8	2	2	3	A. M. E.
Macedonia Miss. ....		1	5	1	5		3	1	1		A. M. E.
Coleman Miss. ....		1	3	1	9			2	1	12	A. M. E.

## PERRY DISTRICT—REV. P. E. DAUGHTERY, P. E.

St Paul Station .....	\$ 2.35	1	9	3	60		6				A. M. E.
Fountain Chapel Sta. ....		1	10	6	60	1	12	5	12	1	A. M. E.
Union Hill Sta. ....											A. M. E.
Bolden Cir. ....	2.00	2	8	6	40	22		2	2		A. M. E.
Waukeenah Cir. ....		1	4	2	12	4	12	2	2	4	A. M. E.
Boyd Miss. ....		1	5	3	20		20	2	3	1	A. M. E.
Spring Hill Miss. ....		2	10	4	20		20	4	5	2	A. M. E.
Capps Miss. ....		1	3	3	10	1	8	1	1		A. M. E.
Carbur Miss. ....											A. M. E.
Drifton Miss. ....		1	2	1	4	3	3	1	1		A. M. E.
Fanlue Miss. ....							1	1	1		A. M. E.
Crawfordville Miss. ....											A. M. E.
Foley Miss. ....		1	9	3	35		5	1		35	A. M. E.



A. M. E. CHURCH

TALLAHASSEE DISTRICT—REV. A. I. G. RICHARDSON, P. E.

No. of Missionary Societies	No. of Temperance Societies	For the support of S. S.	For all Mission Funds by Sunday School	For all Connectional Funds by S. S.	For all Children's Day Funds by S. S.	Total	Value of S. S. Property	Indebtedness of S. S. Treasury	Balance in S. S. Treasury
		\$320.26		\$ 10.00	\$ 5.00	\$335.33	\$ 78.00	\$ 18.00	\$ 2.00
1		15.01	1.00	1.00		17.01			.65
1		8.00	2.00	6.00	2.00	18.00	8.00		.90
1			3.00		4.00	7.00	10.00		1.50
2		25.00		10.00	1.00	36.00			
2		10.00		10.00	2.00	22.00		62.50	3.30
		6.20		4.00		10.20			1.45

MONTICELLO DISTRICT—REV. I. S. ROUNDTREE, P. E.

1	1				\$ 3.00	\$ 3.00	\$ 8.00		\$ .50
		.15			3.00		15.00		1.00
1		6.00			1.00	7.00	50.00		.50
		10.00			1.00	11.00	10.00		
						189.50			
2		15.26			1.00	16.26			
2		12.00	1.64	4.00	2.00	20.78			1.14
									.75
1		7.00							2.07
1		19.65		1.00	1.00	21.65			
1	1	1.25				1.25	250.00	.80	
		5.00					35.00		.10
		3.00					3.00		

PERRY DISTRICT—REV. P. E. DAUGHTERY, P. E.

		\$ 30.00							\$ 1.45
2		25.00			2.00	27.00			
		15.00				15.00			
		5.00	1.00	2.00	.50	8.50			
1		3.00				111.11	2.00		
		4.00		1.00	1.00	5.00	50.00		
2									
1		15.50				3.56			



## MADISON DISTRICT—REV. C. H. BURGESS, P. E.

CHARGES	PASTORS	Members found in Charge									
		Members	Persons	Accessions	Members	Probationers	Local	Missionary	Temperance	A. C. E.	Church
		found	Converted		in Charge	in Charge	Preachers	Societies	Societies	Leagues	Auxiliaries
Mt. Zion Sta. ....	Rev. S. D. Cooper .....	140	2	5	141		1	1			
Bellville Sta. ....	Rev. I. Twiggs .....	175	19	22	189		1	1	1	1	
Mt. Zion No. 2 Sta..	Rev. S. P. Robinson .....	164	9	8	180		2	1	1	1	
Jeslam Sta. ....	Rev. A. Bing .....	120	5		134			1		1	1
Greenville Sta. ....	Rev. C. T. Sikes .....	98	7	5	80						
St. Matthew Sta. ....	Rev. D. J. Jackson .....	80	3	1	81		3	1		1	3
Antioch Sta. ....	Rev. J. B. Branch .....	77			85			1			
Antioch Miss. ....	Rev. A. V. Moore .....	55	8	3	61		1	1	1	1	8
Hamburg Miss. ....	Rev. D. V. Wilson .....	36	8		54				1		
Greenville Miss. ....	Rev. H. Hampton .....	26			26		1	1		1	
St. Paul Miss. ....	Rev. H. Montgomery .....	36			36						
Old St. Paul Miss. ....	Rev. W. A. Adams .....	20			14						
Burnam Miss. ....	Rev. A. Bing .....	24	1	5	30		1	1		1	1
Jenning Miss. ....	Rev. I. Twiggs .....	7	2	4	13		1	1			
Nebo Miss. ....	Rev. R. Bradwell .....	38		4	36			1			3
Midway Miss. ....	Rev. B. J. Mack .....	6		4	6			1			

## QUINCY DISTRICT—REV. A. L. BENNETT, P. E.

Quincy Sta. ....	Rev. J. F. Livingston .....	225	3	2	247	2	1	1	1	1	14
St. John Sta. ....	Rev. B. Zanders .....	175	12	12	190			1	1	1	
St. James Sta. ....	Rev. W. G. Pinkney .....	130		3	137			1		1	
Mt. Zion & Palace C.	Rev. I. Hackly .....	280	17		290			1		1	1
Springfield Cir. ....	Rev. H. Jones .....	204	18	20	210		1	2		2	
St. Hebron Cir. ....	Rev. B. W. Roberts .....	200	6	6	200			2	2		
Old Bethel Cir. ....	Rev. T. E. Yant .....	110	3	16	129	3	1	1		1	9
Green Shade Cir. ....	Rev. J. H. Reshard .....	84	4	6	73	9		1		1	1
Union Chappelle Cir.	Rev. J. T. Wilson .....	64	8		66			1		1	9
Fountain Head M. ....	Rev. I. F. Bradley .....	15		1	16						
Hope Well Miss. ....	Rev. J. C. Bradley .....	53	4	1	58		3	1		1	6
Bradwell & M'Flower	Rev. A. F. Little .....	31	4	4	35			1		1	1
Mt. Olive Miss. ....	Rev. A. Hinson .....	45	2	2	47		1	1			7
St. Peters Miss. ....	Rev. Jacob Auston .....	10	1	1	12						
St. Luke Miss. ....	Rev. S. Neely .....	10	2	2	15						



MADISON DISTRICT—REV. C. H. BURGESS, P. E.

Other Societies	No. of Churches	Seating capacity of Churches	No. of Parsonages	No. of School Houses owned by Charge	Adults Baptized	Infants Baptized	No. of Deaths	Dollar Money Fund	Theological Seminary Fund	Conference Contingent	Allen Day	Founders' Day—E. W. C.	Easter Day Fund	P. H. & F. M. Fund	W. H. & F. M. Fund
1	1	500	1		3		3	77.00	2.00	8.00	2.00	1.00	5.00		9.00
1	1	500	1		16		4	70.00	1.00	10.00	2.00	1.00	5.00		9.00
1	1				9			40.25	1.00	5.00	1.00	1.00	2.00	1.00	3.00
1	1				3			40.00	1.00	3.00	1.00		2.00	4.00	4.00
1	1	300	1		5		1	30.00	1.00	3.00	1.50	1.00	3.00	1.00	4.00
1	1	500			3		2	20.00	1.00	2.50	1.00		3.00		2.00
1	1				3		1	26.00	.85	3.00	1.00		4.00		3.60
2	1	300			3		1	10.00	1.00	3.00	1.00		1.50		3.40
								11.00	1.00	3.00	1.00		2.50		2.00
3	1							5.00	1.00	2.50	1.00		.50		2.00
								2.50		2.50	1.00				4.00
								4.00		2.50					
1	1				1			10.00	1.00	2.00	1.00		1.00	1.00	
1	1	200				2	1	5.00	1.00	2.50	1.00		1.50		2.00
1	1	50						12.00	1.00	2.50	1.00		1.00		2.00
1	1	100					1	3.00	.50	1.00					1.00

QUINCY DISTRICT—REV. A. L. BENNETT, P. E.

1	1	400	1		2	4	3	145.00	2.00	10.00	4.00	1.00	4.00	2.00	8.00
1	1	425	1	1				65.00	1.00	4.00	1.00	1.00	2.00	1.00	3.00
1	1							55.00	1.00	4.00	2.00	1.00	2.00	1.00	3.00
1	2	500			17	5		81.00	1.00	5.00	2.00	1.00	2.00	1.00	3.00
2	2	500	1		18	12	3	50.00	1.00	5.00	1.00	1.00	2.00	1.00	3.00
2	2	600			6	10	4	75.00	1.00	5.00	2.00	1.00	1.00	1.00	1.00
1	2	900		1	3	16	7	25.00		3.00	1.00	1.00	1.00	1.00	1.00
1	1	200			4	6	7	18.00	1.00	2.50	1.00	1.00	1.00	1.00	1.00
1	1	250			5	12	2	20.00	1.00	3.00	1.00	1.00	1.00	1.00	1.00
1	1	75						4.00							1.00
1	1	500			4			10.00	1.00	2.50	1.00	1.00	1.00	1.00	1.00
2	2	80			4			10.00	1.00	2.50	1.00	1.00	1.00	1.00	1.00
2	2	75		2	1	1	2	10.00	1.00	2.50	1.00	1.00	1.00	1.00	1.00
1	1	50						2.00		2.50					
2	2				2			5.00		2.50	1.00	1.00	1.00	1.00	



## MADISON DISTRICT—REV. C. H. BURGESS, P. E.

CHARGES	Educational Fund May Day	Educational Fund Personal	Minute Money	E. W. C. Building Fund	Children's Day Fund	Students' Fund	E. W. C. Improvement Fund	Endowment Day Fund	Pension Fund
Mt. Zion Sta. ....	\$ 20.00	\$ 1.00	\$ 2.00	\$ 1.00	\$ 4.00	\$ 1.20	\$ .	\$ 39.00	\$ 1.00
Bellville Sta. ....	20.00	1.00	2.00	.	4.00	1.20	.	39.00	1.00
Mt. Zion No. 2 Sta..	10.00	.	2.00	.	2.00	1.20	.	8.00	1.00
Jeslam Sta. ....	15.00	.	2.00	.	2.00	1.00	.	25.00	1.00
Greenville Sta. ....	15.00	1.00	2.00	.	2.50	1.20	1.00	30.00	1.00
St. Matthew Sta. ....	15.00	.	2.00	.	1.00	1.00	.	17.50	1.00
Antioch Sta. ....	18.00	.	2.00	.	3.00	.	.	23.00	1.00
Antioch Miss. ....	7.00	.	1.20	.	1.00	1.00	.	13.00	.
Hamburg Miss. ....	9.00	.	1.00	.	1.20	1.20	.	15.00	1.00
Greenville Miss .....	8.00	.	1.05	.	1.00	.	2.00	3.20	1.00
St. Paul Miss .....	.	.	.	.	1.00	.	.	.	.
Old St. Paul Miss.....	2.00	.	1.05	.	.	.	.	4.00	.
Burnam Miss. ....	.	.	.	.	1.00	1.00	.	3.00	.
Jenning Miss. ....	3.00	.	.50	.	1.00	.	.	4.00	.
Nebo Miss. ....	8.00	.	.75	.	.50	1.20	.	9.00	.75
Midway Miss. ....	1.00	1.00	.75	.	1.00	.	.	.	.

## QUINCY DISTRICT—REV. A. L. BENNETT, P. E.

Quincy Sta. ....	\$ 70.00	\$ 1.00	\$ 4.50	\$ 1.00	\$ 4.20	\$ 1.20	\$ 1.00	\$ 53.00	\$ 2.00
St. John Sta. ....	25.00	1.00	2.00	1.00	1.00	1.20	1.00	26.00	1.00
St. James Sta. ....	30.00	.	2.00	1.00	1.00	1.20	1.00	30.00	1.00
Mt. Zion & Palace C.	60.00	.	2.00	1.00	2.00	1.00	1.00	22.00	1.00
Springfield Cir. ....	40.00	.	2.00	1.00	1.00	1.20	1.00	28.00	1.00
St. Hebron Cir. ....	55.00	.	3.00	1.00	1.00	1.20	1.00	30.00	1.00
Old Bethel Cir. ....	15.00	.	2.00	1.00	1.00	1.20	1.00	16.00	1.00
Green Shade Cir. ....	20.00	.	1.00	1.00	1.00	1.20	1.00	10.00	1.00
Union Chapelle Cir.	25.00	.	1.00	1.00	1.00	1.25	1.00	1.00	1.00
Fountain Head M. ....	.	.	.	.	1.00	.	.	1.00	1.00
Hope Well Miss. ....	8.00	.	1.00	1.00	1.00	1.20	.	10.00	1.00
Bradwell & M'Flower	5.00	.	1.00	1.00	1.00	1.20	1.00	10.00	1.00
Mt. Olive Miss. ....	5.00	.	1.00	1.00	1.00	.	1.00	10.00	1.00
St. Peters Miss. ....	.	.	.	.	.	.	.	.	.
St. Luke Miss. ....	4.00	.	1.00	.	1.00	.	.	4.00	.







## MADISON DISTRICT—REV. C. H. BURGESS, P. E.

CHARGES	A. M. E. Review	Southern Christian Recorder	Voice of Missions	Western Christian Recorder	Star	Woman's Missionary Recorder	Pastor's Support	P. E. Support	Charitable Purposes	Purchasing Building or Repairing
Mt. Zion Sta. ....	\$1.00						\$370.37	\$110.86	\$8.00	\$10.50
Bellville Sta. ....	1.00						232.50	110.71	10.00	38.50
Mt. Zion No. 2 Sta. ....	1.00						238.55	67.20	12.00	67.97
Jeslam Sta. ....							162.00	55.00		
Greenville Sta. ....	1.00						225.00	50.00	12.00	728.82
St. Matthew Sta. ....							187.50	40.00	7.00	10.00
Antioch Sta. ....							154.99	51.51	5.30	9.00
Antioch Miss. ....							75.00	30.70	2.00	5.00
Hamburg Miss. ....							130.00	36.00		25.00
Greenville Miss. ....							36.60	22.50	3.00	
St. Paul Miss. ....							46.30	23.50		
Old St. Paul Miss. ....							15.50	12.25		
Burnam Miss. ....							54.00	9.75		
Jenning Miss. ....							48.50	16.50		5.00
Nebo Miss. ....							127.36	32.00		
Midway Miss. ....							3.20	10.62		

## QUINCY DISTRICT—REV. A. L. BENNETT, P. E.

Quincy Sta. ....	\$ .	\$ .	\$ 1.00	\$ .	\$ .	\$ .	\$ 602.70	\$ 153.85	\$ 50.00	\$ 150.00
St. John Sta. ....	1.00						335.00	100.00	35.00	125.00
St. James Sta. ....	1.25						389.43	102.00	37.89	37.10
Mt. Zion & Palace C. ....	1.00						300.00	80.00	10.00	10.00
Springfield Cir. ....	1.00						425.00	135.00		
St. Hebron Cir. ....	1.00						315.00	85.00	8.00	10.00
Old Bethel Cir. ....			1.00				321.77	50.59	11.00	120.00
Green Shade Cir. ....							175.50	60.95	12.00	8.00
Union Chappelle Cir. ....							252.20	80.00	28.00	40.00
Fountain Head M. ....							23.86	7.75	1.50	
Hope Well Miss. ....			1.00				150.00	47.00	4.00	18.00
Bradwell & M'Flower							150.00	50.00	5.00	27.00
Mt. Olive Miss. ....							72.00	35.00	5.00	10.00
St. Peters Miss. ....							36.00			10.00
St. Luke Miss. ....							80.00	15.00	5.00	20.00







## MADISON DISTRICT—REV. C. H. BURGESS, P. E.

CHARGES	Bal. in Trustee's Treasury											Literature used
		No. of S. Ss.	No. of Officers	No. of Teachers	No. of Pupils	No. of Conversions during the year	No. of Circulating Books in Library	No. of Bibles	No. of Hymn Books	No. of Lesson Helps taken quarterly		
Mt. Zion Sta. ....	\$ .	1	4	3	60	2	30	2	1	48	A. M. E.	
Bellville Sta. ....	1	4	6	58							A. M. E.	
Mt. Zion No. 2 Sta. ....	67.97	1	21	3	80	9	5	1	1	35	A. M. E.	
Jeslam Sta. ....	1	3	3	36	5	22	7	3			A. M. E.	
Greenville Sta. ....	1	12	4			20	2				A. M. E.	
St. Matthew Sta. ....	5.00	1	5	3	35	3		2	1	12	A. M. E.	
Antioch Sta. ....	1.20	1	4	3	35		20	1	1	1	A. M. E.	
Antioch Miss. ....	1.50	1	5	3	26			1	1		A. M. E.	
Hamburg Miss. ....											A. M. E.	
Greenville Miss. ....		1	5	2	27		2	1	2	1	A. M. E.	
St. Paul Miss. ....											A. M. E.	
Old St. Paul Miss. ....		1									A. M. E.	
Burnam Miss. ....	8.00	1	2	2	23	1	24	3	2		A. M. E.	
Jenning Miss. ....	1	4	2	10	2						A. M. E.	
Nebo Miss. ....	2.15	1	7	2	19		14	1	1		A. M. E.	
Midway Miss. ....	1	3	2	30							A. M. E.	

## QUINCY DISTRICT—REV. A. L. BENNETT, P. E.

Quincy Sta. ....	\$ .	1	18	8	70		28	12	1	36	A. M. E.
St. John Sta. ....	1	4	4	64	1	18	1	1	24		A. M. E.
St. James Sta. ....	1	9	9	110		3	6	6	9		A. M. E.
Mt. Zion & Palace C. ....	2	18	3	105		5	12	10			A. M. E.
Springfield Cir. ....	2	15	6	55	18	20	10	2			A. M. E.
St. Hebron Cir. ....	2	14	8	115	6	8	15	1	48		A. M. E.
Old Bethel Cir. ....	9.00	2	18	8	77	3	15	1	2	1	A. M. E.
Green Shade Cir. ....	2.00	1	9	4	48	4	15	1	12		A. M. E.
Union Chappelle Cir. ....		1	8	5	67	8	3	2	2	18	A. M. E.
Fountain Head M. ....		1	3	1	8	1	11	1			A. M. E.
Hope Well Miss. ....	36.00	1	6	2	20		10	1	1	10	A. M. E.
Pradwell & M'Flower ....		2	8	4	35						A. M. E.
Mt. Olive Miss. ....		2	6	4	30	2	15	6			A. M. E.
St. Peters Miss. ....											A. M. E.
St. Luke Miss. ....		2	8	5	15	3		5	1		A. M. E.



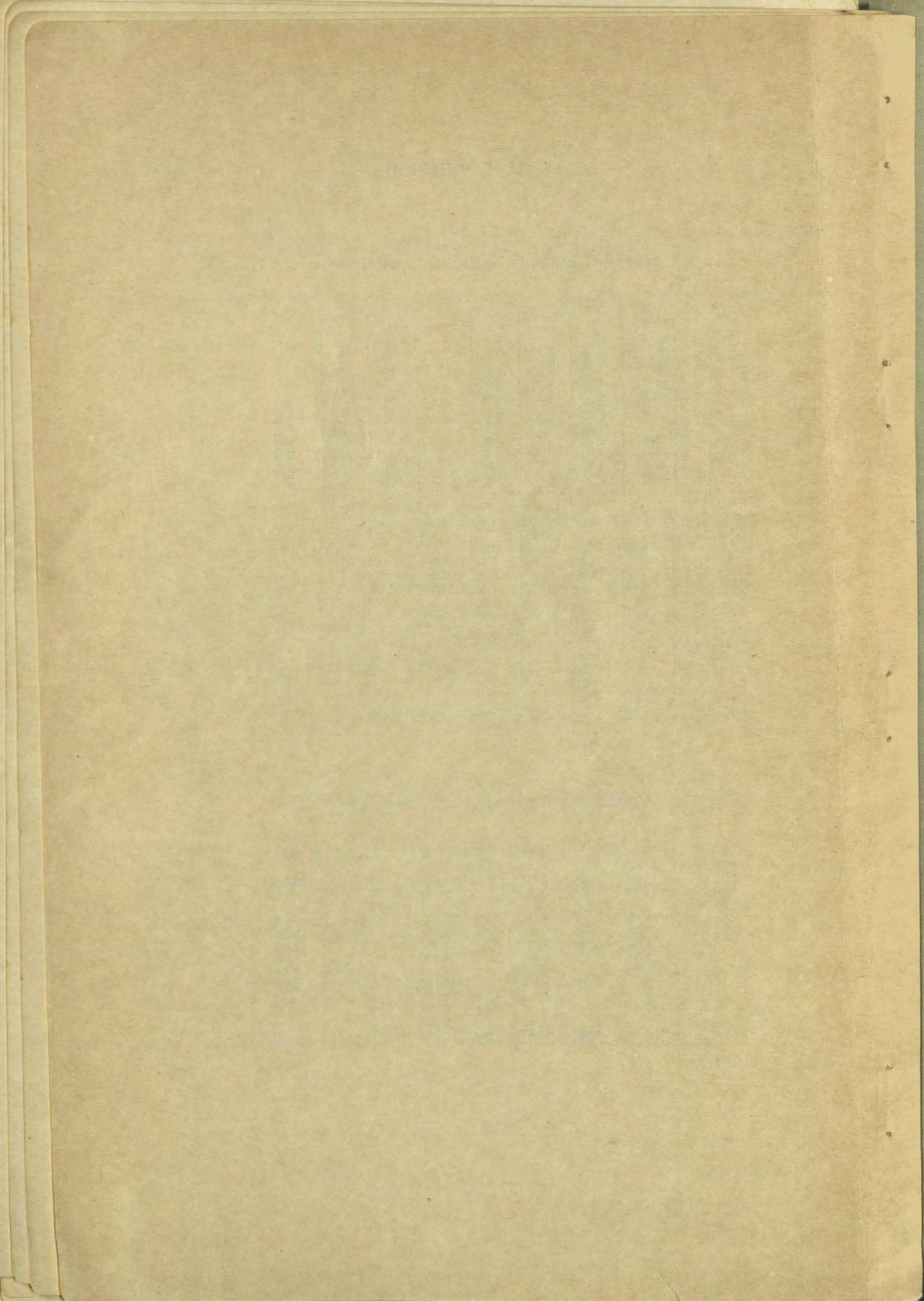
## MADISON DISTRICT—REV. C. H. BURGESS, P. E.

No. of Missionary Societies	No. of Temperance Societies	For the support of S. S.	For all Mission Funds by Sunday School	For all Connectional Funds by S. S.	For all Children's Day Funds by S. S.	Total	Value of S. S. Property	Indebtedness of S. S. Treasury	Balance in S. S. Treasury
1		\$ 48.00	\$ 4.00	\$ 9.00	\$ 4.00	\$ 61.00	\$ 8.00		\$ 1.25
1	1	19.52		2.00	2.00				1.75
1			4.00		4.00				
1			75.00			75.00			2.37
1		3.50		6.00	1.50	11.00	500.00		1.00
1	1	3.50	1.50	.50	.50	5.00			1.50
1							150.00		.50
		.55				.55			
1					1.00				.56
1		4.00	1.00		1.00				
1		6.80							1.69
1		4.00			1.00	5.00			

## QUINCY DISTRICT—REV. A. L. BENNETT, P. E.

1		\$ 64.07	\$	\$ 4.00	\$ 2.00	\$ 69.27	\$	\$	\$ 3.00
1		54.00		1.00					
2		66.00	3.45	31.25	12.35	113.05			26.30
2	1	10.00	3.00	5.00	5.00	23.00	8.00		
2		15.00		8.50	1.00	28.00			
2		4.30	8.00	35.00	4.00	51.30			3.70
1		6.00	2.00	5.00		13.00	10.00		1.24
1		18.91	6.00	6.00	1.25	32.16	3.00		1.80
1		3.38							6.34
		6.00	1.50	8.00		165.00			1.20
		10.00			1.00	16.00			
1		15.00	2.00	2.00	1.00				







F287.8

F636

1936

unacc.



